

Leveraging ICD-10 Patient Volume Data to Improve Clinical Trial Feasibility and Portfolio Management

Jeff Edelman, Bucky Jones-Lombard, Daniel Jewett, Emir Basic, Mili Ugrenovic, Jay Lebsack



Background

- Feasibility review, site qualification, accrual goal, and trial portfolio are all dependent on accurate patient volumes. Historically, estimated enrollment was based on the PI's experience in their individual clinic, rather than department or institution-wide knowledge. Because of this tunnel vision, the numbers were often not accurate which led to studies either under or over performing
- Staff used several reports to assess new patients which was inefficient, time consuming, and often left patients unreviewed.
- The ICD-10 Code Patient Volume Dashboard was developed to streamline screening efforts and assist in portfolio management.

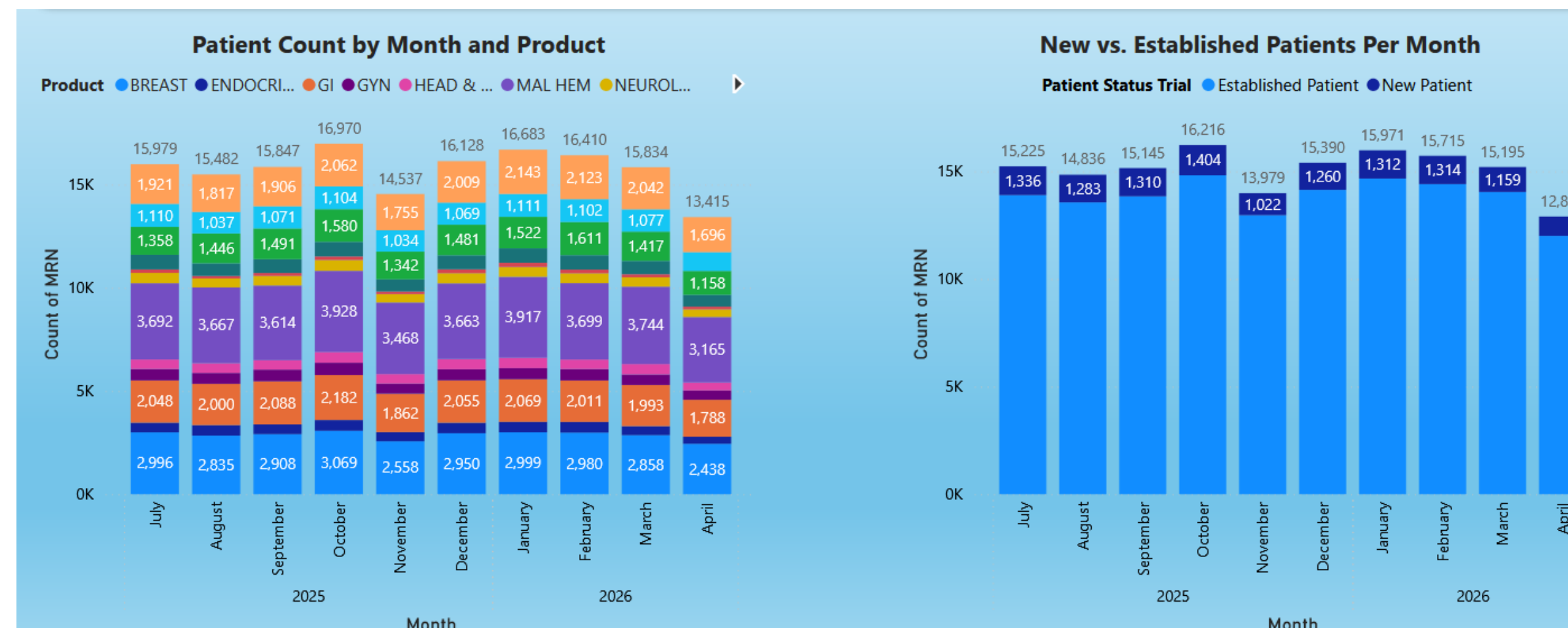
Goals

- Assist in accuracy for feasibility review and accrual pace determination based on actual patient volumes.
- Assist in portfolio management by identifying gaps and strategic assignment of trials to our Moffitt Ambulatory Clinics (MACs)
- 3) Rapid, preliminary identification of patients that are grossly eligible for clinical trials.

Solutions and Methods

- Cross-functional collaboration between CTO and Decision Support Office, with subject matter experts enlisted throughout .
- ICD-10 code, physician, and clinic location data pulled from billing system.
- Piloted in Malignant Hematology program with roll-out by 2 physicians/clinic. Validated by reviewing the top 20 ICD-10 codes per piloting physicians.

The Dashboard in Review



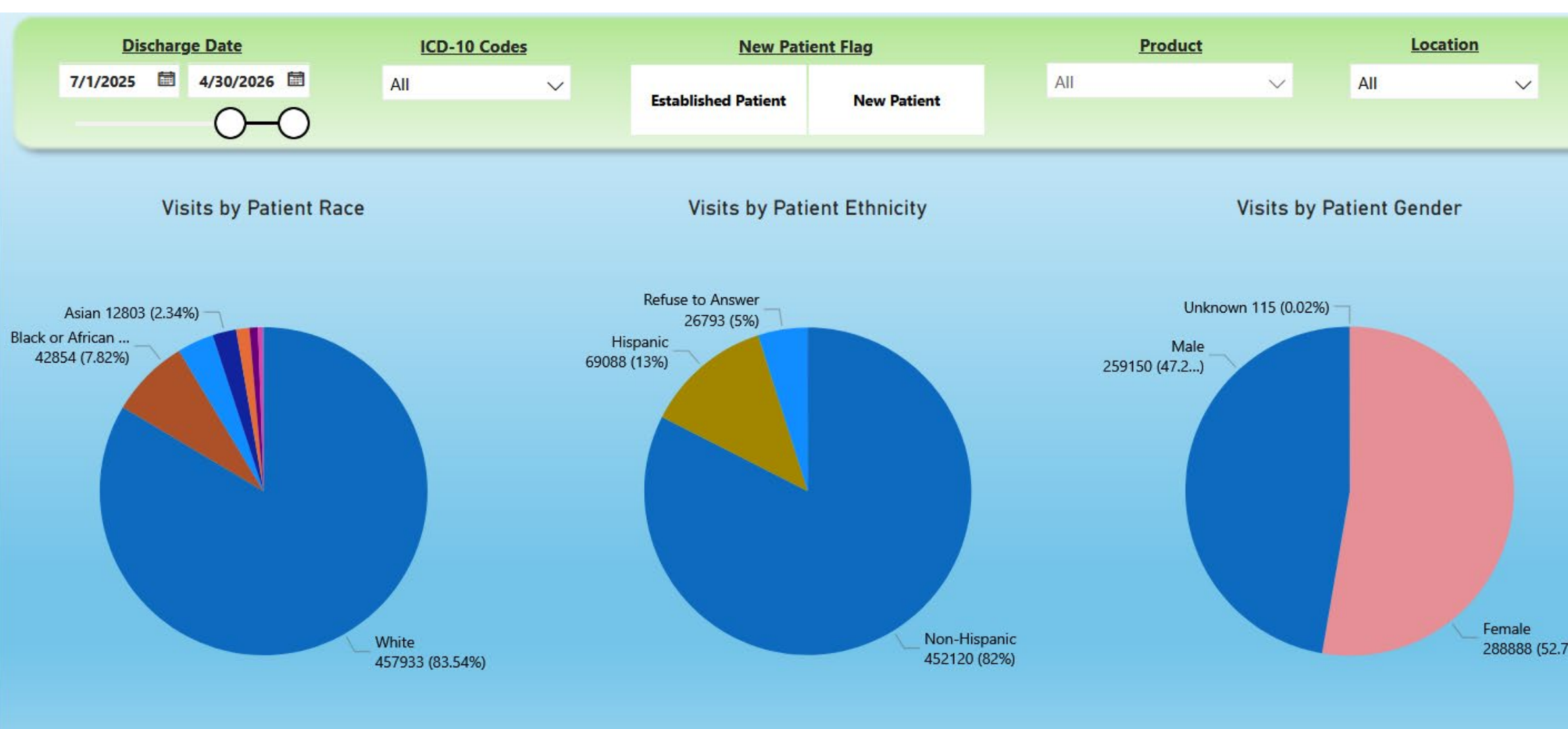
Year	New Patient Count By Month and Fiscal Year												Total
	2025					2026							
PRODUCT GROUPING	July	August	September	October	November	December	January	February	March	April			
BREAST	399	365	408	412	329	408	313	371	295	264	3,564		
BREAST-OTHER RELATED	229	209	241	247	180	218	189	224	183	150	2,070		
ENDOCRINE	88	89	76	76	65	85	63	70	57	60	729		
ENDOCRINE-ADRENAL	4	3	8	4	5	8	5	7	2	1	47		
ENDOCRINE-OTHER	28	35	22	24	21	31	21	23	11	13	229		
ENDOCRINE-PITUITARY	6	7	10	6	6	6	6	1	7	5	60		
ENDOCRINE-THYROID	50	44	36	42	33	40	31	39	37	41	393		
GI	343	294	354	326	250	289	230	236	203	165	2,690		
GI-ABDOMEN	1				1			1	2		6		
Total	2,862	2,725	2,789	2,890	2,301	2,669	2,513	2,670	2,609	2,726	26,754		

Outcomes

- Dashboard released to all clinics for all providers
- Established patient volumes added
- Historical patient volumes added for better trend analysis
- Monthly link to the dashboard shared with research leadership

Refinements and Next Steps

- Solid tumor data is limited: ICD-10 codes do not encompass the granular information needed. Future version would include mapping the ICD-10 code with the pathology, staging, and biomarkers to further enhance specificity.
- Consider utilizing dashboard review for feasibility committee form submission and committee review
- Explore additional ways the dashboard may be utilized further given the range of patient data availability?
- Determine future usage in the AI integration world



Product	Sub-Product	ICD-10 Code	ICD-10 Name	Count of MRN
MAL HEM	Myeloma - Multiple Myeloma	C90.00	Multiple myeloma not having achieved remission	4,273
		C90.01	Multiple myeloma in remission	1,031
		C90.02	Multiple myeloma in relapse	657
		D47.2	Monoclonal gammopathy	260
		E85.81	Light chain (AL) amyloidosis	131
		C61	Malignant neoplasm of prostate	117
		E85.9	Amyloidosis, unspecified	79
		E85.4	Organ-limited amyloidosis	76
		C79.51	Secondary malignant neoplasm of bone	64
		D46.9	Myelodysplastic syndrome, unspecified	60
		C50.919	Malignant neoplasm of unsp site of unspecified female breast	37