

Strengthening Connections: Integrating Clinical Trials into Patient and Public Education

Gayatri Nachaegari, M.Pharm, CCRP; Susanna Fraser, MPH, CCRC; Donna Branson, BA; Jessica Moehle, BS, CCRP; Theresa L Werner, MD

BACKGROUND

Providing patient education and facilitating access to clinical research are two vital ways that cancer centers serve our communities; however, many education and research programs develop independently with minimal coordination between departments.

Huntsman Cancer Institute (HCI) is strengthening connections between our patient and public education program and the clinical trials office to ensure that all patients receive timely, accurate information about clinical trials and appropriate referrals to care.

GOALS

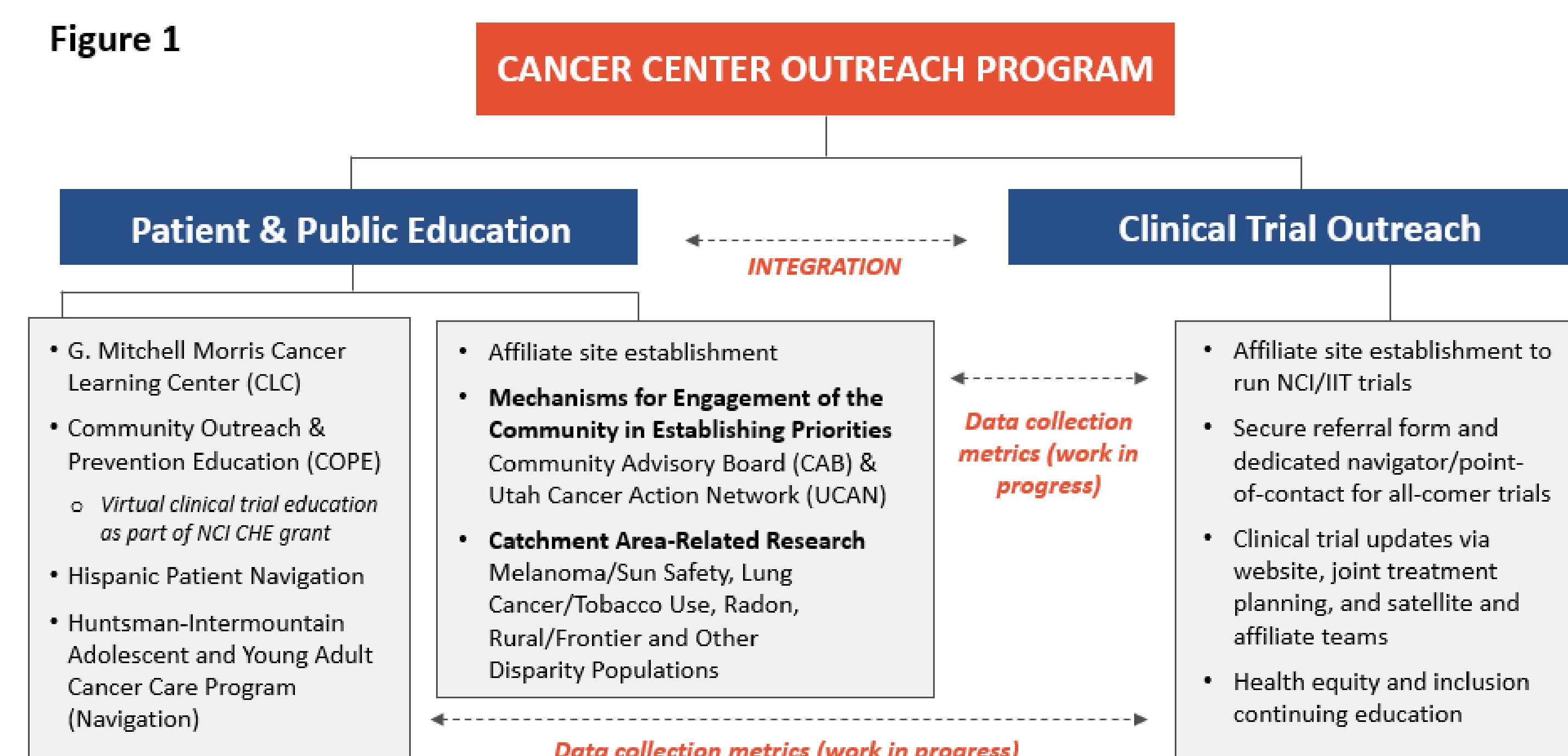
1. Strengthen connections between clinical trials office outreach and other cancer center resources like the patient and public education department
2. Increase clinical trial accruals among women, minorities, and individuals from rural/underserved areas
3. Develop metrics to capture clinical trial enrollments facilitated by this interdepartmental collaboration

CURRENT STRATEGIES

HCI's patient and public education department and clinical trials office are already collaborating in several areas, shown in Figure 1 below.

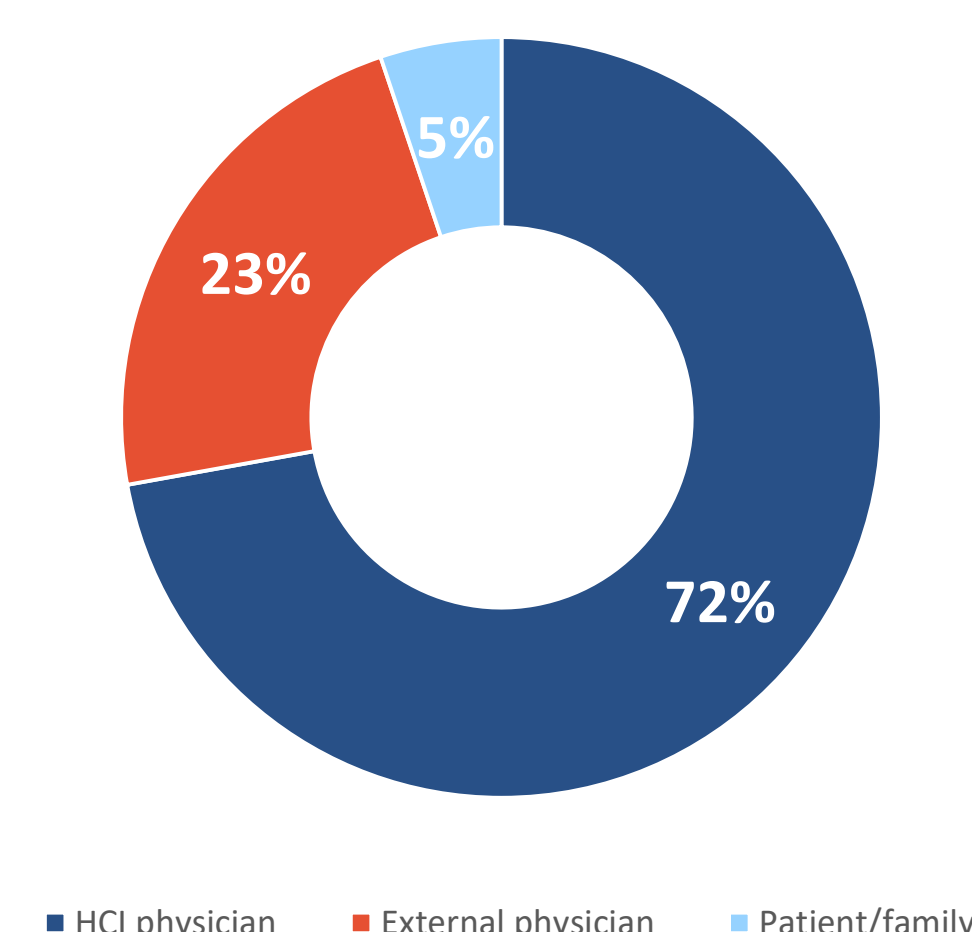
Both teams are working to streamline our information sharing to better capture the impact of different outreach programs on clinical trial enrollments, particularly among underserved populations.

Figure 1

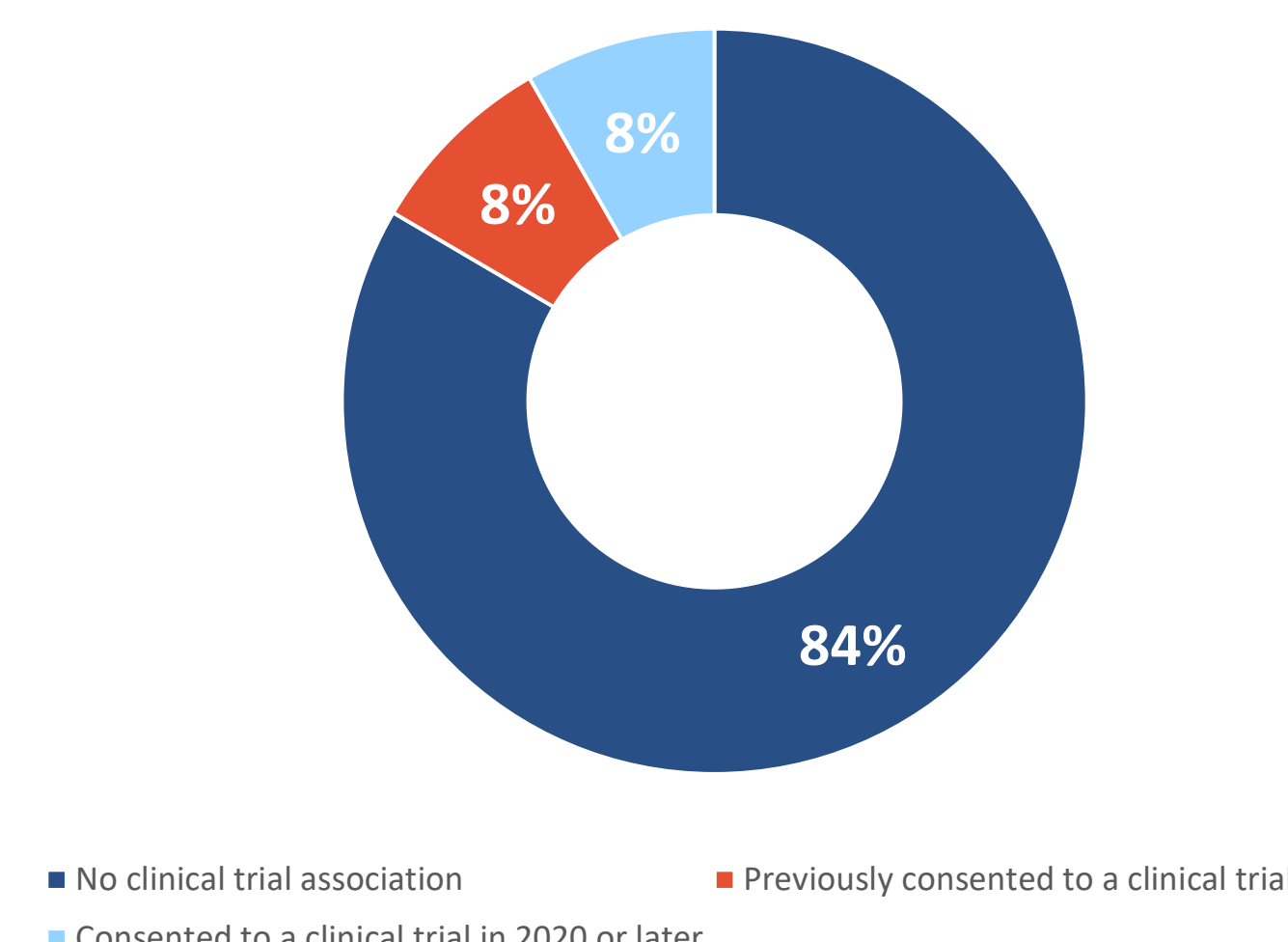


Though limited, our existing data provides valuable direction for improving community outreach and collaborative efforts.

Referral Source for Phase 1 Clinical Trials (2020)



Patient Navigator Contacts Support (2020)



OUTCOMES

Although these strategies are continually being refined, we expect the following benefits:

- Streamlined process for patients and families seeking clinical trial information
- Shorter timelines for providers referring patients to clinical trials
- Increased clinical trial accruals among women, minorities, and individuals from rural/underserved areas

FUTURE STRATEGIES

We continue to strengthen the relationship between HCI's education and research programs by incorporating the following strategies:

- Promoting clinical trials in rural/underserved areas via patient and public education
- Developing metrics to identify clinical trial enrollments facilitated by this partnership between groups
- Improving access and eliminating barriers to care through quarterly Health Equity subcommittee meetings
- Offering virtual clinical trials education as part of the NCI Community Health Educator grant
- Continuing clinical trials training for patient navigators as new staff are hired
- Providing clinical trials training for financial advocates to help reduce financial barriers to accrual
- Updating the clinical trials search on the HCI web site