

Some email communications may be filtered to your Spam or Junk folder, even if you have subscribed to them. Please mark [aaciupdate@aaci-cancer.ccsend.com](mailto:aaciupdate@aaci-cancer.ccsend.com) as a Safe Sender to ensure that AACI emails are delivered to your inbox.

## News From the Association of American Cancer Institutes | January 2026

[Click here](#) to read the full newsletter on our website.



[Awards & Honors](#) | [Grants & Gifts](#) | [Leadership Transitions](#) | [Research Highlights](#) | [Other News](#)  
[Job Opportunities](#) | [Meeting Announcements](#)

## AACI HEADLINES

### [AACI Welcomes UMass Memorial Health Cancer Center](#)



AACI is pleased to announce that [UMass Memorial Health \(UMMH\) Cancer Center](#) became the association's newest member in December 2025. UMMH Cancer Center is led by **David Cachia, MD**, interim chief of Hematology Oncology Services and associate professor of neuro-oncology at the University of Massachusetts. [Read More](#)

### [Call for Abstracts: 18th Annual AACI CRI Meeting](#)



The AACI Clinical Research Innovation (CRI) Steering Committee is currently [soliciting abstracts](#) for the [18th Annual AACI CRI Meeting](#). This year's meeting theme is "Shaping the Future of Clinical Trial Innovation." The purpose of the abstracts is to inform attendees about challenges and solutions implemented at AACI cancer centers, showcasing advancements across key areas in clinical research and operational excellence. [Read More](#)

### [CADEx Spotlight: Bringing Data and People Together in Clinical Research](#)

"Bringing Data and People Together in Clinical Research" will focus on practical ways to use catchment area data to ensure that clinical trial enrollment reflects both the broader population and specific neighborhoods. The session is scheduled for 9:00 am eastern time on **Wednesday, March 11**. [Read More](#) | [Register for the 2026 AACI CADEx Conference](#)



## [Place an Ad in the AACI Newsletter](#)

AACI invites you to promote your cancer center or company by purchasing an ad in the [AACI Update](#). Your ad may highlight a conference, new initiative, or product of interest to AACI members. In addition to newsletter ads, AACI offers a variety of support opportunities for its annual events. For more information about supporting AACI, please contact Development Manager [Chelsea Borries](#). [Read More](#)

## [AACI Launches New Cancer Service Line Listserv](#)

AACI is pleased to announce the launch of a new [Cancer Service Line listserv](#). This new platform offers an additional space for members to connect, share best practices, and exchange insights. All AACI members who work with service lines are welcome to participate. Subscribers must have a valid cancer center email address to join. [Read More](#)

## NEWS FROM THE CENTERS

### AWARDS & HONORS

## [Giuliano Honored With McGuire Memorial Award](#)

### [Cedars-Sinai Cancer](#)



**Armando E. Giuliano, MD**, received the William L. McGuire Memorial Lecture Award in December at the San Antonio Breast Cancer Symposium, in recognition of his development of the sentinel lymph node technique, transforming surgical management of breast cancer. [Read More](#)

## [Pediatric Oncology Researcher Elected to National Academy of Inventors](#)

### [Indiana University Melvin and Bren Simon Comprehensive Cancer Center](#)



**Mark R. Kelley, PhD**, senior leader for biomedical innovation and partnerships at the Indiana University Melvin and Bren Simon Comprehensive Cancer Center, has been named a 2025 fellow of the National Academy of Inventors for his contributions to pediatrics and cancer research. [Read More](#)

## [A Scientist Without Borders Steps Onto the National Stage](#)



Edna "Eti" Cukierman, PhD, was recently appointed to the National Cancer Institute's Working Group for Extramural Research Concepts, an advisory group that brings together 35 national experts to help shape the direction of federally supported cancer research. [Read More](#)

## [Designation Announced for NORD Rare Disease Center of Excellence](#)

[The University of Kansas Cancer Center](#)

The University of Kansas Medical Center, Children's Mercy, and the University of Kansas Health System have collectively been designated a NORD Rare Disease Center of Excellence by the National Organization for Rare Disorders (NORD). The NORD Rare Disease Centers of Excellence Network now includes 46 institutions across 28 states and Washington, DC. [Read More](#)

## [Breast Cancer Researcher Elected to National Academy of Inventors](#)

[UCLA Jonsson Comprehensive Cancer Center](#)



Dennis Slamon, MD, PhD, whose innovations in breast cancer treatment have benefited millions around the globe, was named to the 2025 class of the National Academy of Inventors. [Read More](#)

### GRANTS & GIFTS

## [\\$30 Million Gift to Improve Access to Rural Health Care](#)

[Mays Cancer Center at UT Health San Antonio MD Anderson](#)

## [\\$30 Million Gift Creates BRCA Center](#)

[Cedars-Sinai Cancer](#)

## [UAMS Awarded \\$10.5 Million as Nationwide Hub to Develop Biomarkers for Human Diseases Including Cancer](#)

[UAMS Winthrop P. Rockefeller Cancer Institute](#)

## [\\$7.5 Million for Tobacco Cessation](#)

[Siteman Cancer Center](#)

## [BCRF Awards \\$2.6 Million in Grants](#)

[Fred Hutch Cancer Center](#)

## [Research Seeks to Unlock Pancreatic Cancer Mysteries With \\$1.8 Million NCI Grant](#)

[UMMC Cancer Center and Research Institute](#)

## [Grant Awarded to Advance Childhood Cancer Research](#)

[The Tisch Cancer Institute at Mount Sinai](#)

### LEADERSHIP TRANSITIONS

## [Ghobadi Named Director of Cellular Therapies](#)

[Siteman Cancer Center](#)



**Armin Ghobadi, MD**, a WashU Medicine professor of medicine and bone marrow transplant specialist, has been named director of cellular therapies at Siteman Cancer Center. The new position formalizes his role as leader of clinical care and clinical research activities related to cellular therapy in the Hematologic Malignancies program at WashU Medicine.

[Read More](#)

## [Goss to Head Cancer Research Administration](#)

[The University of Chicago Medicine Comprehensive Cancer Center](#)



**Kathleen Goss, PhD**, has been named executive director of cancer research administration for UChicago Medicine Comprehensive Cancer Center, effective January 5. She most recently served as senior scientific director for extramural discovery science at the American Cancer Society. [Read More](#)

## [Liekweg Named Associate Director for Administration](#)

[University of Michigan Rogel Cancer Center](#)



The University of Michigan Rogel Cancer Center has named **Christopher J. Liekweg, MBA, CMPE**, associate director for administration and chief department administrator, effective January 12. Liekweg is a senior administrator at VCU Health, the academic medical center of Virginia Commonwealth University. He was previously executive director for radiation oncology at the University of Louisville.

[Read More](#)

### RESEARCH HIGHLIGHTS

## [Dramatic Drop in HIV-Infected Immune Cells Seen After Chemotherapy Given for Cancer in Person Living With HIV](#)

[Sidney Kimmel Comprehensive Cancer Center at Johns Hopkins University](#)

## [New Discovery May Improve Ovarian Cancer Treatment](#)

[University of New Mexico Comprehensive Cancer Center](#)

## [Study Finds Childhood Leukemia Aggressiveness Depends on Timing of Genetic Mutation](#)

[The Tisch Cancer Institute at Mount Sinai](#)

## [Link Between Tumor Metabolism, Drug Efficacy in Cancer Cells May Help Advance Precision Chemotherapy](#)

[Stony Brook Cancer Center](#)

## [Team Discovers How to Target 'Undruggable' Protein That Fuels Aggressive Leukemia](#)

[UCLA Jonsson Comprehensive Cancer Center](#)

## [Genetic Clues Piece Together the Puzzle of Pediatric Thyroid Cancer Predisposition](#)

[Comprehensive Cancer Center St. Jude Children's Research Hospital](#)

## [Leukemia Drug Secures FDA Approval](#)

[University of Michigan Rogel Cancer Center](#)

## [New Research Targets Iron Dependency in Multiple Myeloma Cells](#)

[Duke Cancer Institute](#)

## [Race, Ethnicity and Donor Type Continue to Affect Survival After Donor Stem Cell Transplant](#)

[Roswell Park Comprehensive Cancer Center](#)

## [Research Links Health Impacts Related to 'Forever Chemicals' to Billions in Economic Losses](#)

[The University of Arizona Cancer Center](#)

## [Clinical Trial Using Focused Ultrasound With Chemotherapy Finds Potential Survival Benefit for Brain Cancer Patients](#)

[University of Maryland Marlene and Stewart Greenebaum Comprehensive Cancer Center](#)

## [Differences Revealed in How Multiple Myeloma Develops in Men and Women](#)

[Indiana University Melvin and Bren Simon Comprehensive Cancer Center](#)

## [Significant Mental Health Care Gaps Seen for Childhood Cancer Survivors](#)

[Winship Cancer Institute of Emory University](#)

## [Breakthrough Trial Shows Promising Therapy for Aggressive Brain Cancer](#)

[Huntsman Cancer Institute at the University of Utah](#)

## [Comprehensive Study Settles Debate Over Diet Safety for Cancer Patients](#)

[UF Health Cancer Institute](#)

## [Study Identifies Pathway Driving Prostate Cancer Bone Metastatic Progression](#)

[UK Markey Cancer Center](#)

## [Cell-Free DNA Could Detect Adverse Events From Immunotherapy](#)

[Sidney Kimmel Comprehensive Cancer Center at Johns Hopkins University](#)



## [Study Uncovers Immune Switch for Cancer and Autoimmunity](#)

[Stanford Cancer Institute](#)

## [Next-Generation CAR T Cells Show Stronger, Safer Response in Animal Models, Study Shows](#)

[USC Norris Comprehensive Cancer Center](#)

## [Researchers Identify Strategy for Reducing Risk of Acute Graft-Versus-Host Disease for Many With Blood Cancers](#)

[Roswell Park Comprehensive Cancer Center](#)

## [Cancer-Promoting DNA Circles Hitchhike on Chromosomes to Spread to Daughter Cells](#)

[Stanford Cancer Institute](#)

### OTHER NEWS

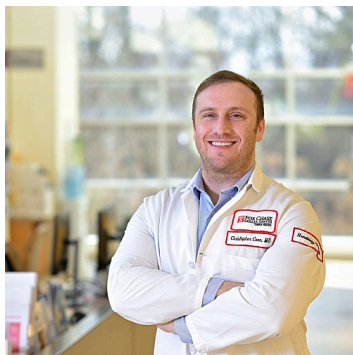
## [Program Aims to Help Childhood Cancer Survivors as They Enter Adulthood](#)

[The University of Kansas Cancer Center](#)

The transition to adult care may get easier for childhood cancer survivors at The University of Kansas Cancer Center, thanks to a \$750,000 grant from Braden's Hope for Childhood Cancer, a Kansas City-based nonprofit organization founded to accelerate the fight against childhood cancer. The award will fund a new Adolescent and Young Adult Cancer Transitions Program at KU Cancer Center. [Read More](#)

## [Cann Leads Effort to Transform Young Adult Cancer Care](#)

[Fox Chase Cancer Center, Temple Health](#)



**Christopher G. Cann, MD**, first found his passion for treating young adult cancer patients as a resident and fellow. Now, after receiving the Robert A. Winn Excellence in Clinical Trials: Career Development Award, he is even better equipped to work with this unique, underserved population. [Read More](#)

### JOB OPPORTUNITIES

## [Administrator - School of Medicine, Medical Oncology](#)

[Winship Cancer Institute of Emory University](#)

## [Deputy Associate Director, Community Outreach and Engagement](#)

[LSU LCMC Health Cancer Center](#)

## [Chief Medical Information Officer](#)

[Fred Hutch Cancer Center](#)

## [Associate Director for Administration](#)

[Indiana University Melvin and Bren Simon Comprehensive Cancer Center](#)

## [Pediatric Oncology and Cellular Therapy Physician Scientist](#)

[Hollings Cancer Center, Medical University of South Carolina](#)

## [Advancing Cancer Research for Latinos and All Populations](#)

[REGISTER TODAY](#)

[February 18-20, 2026](#)

[San Antonio, TX](#)

## [2026 AACI Catchment Area Data Excellence \(CADEx\) Conference](#)

[REGISTER TODAY](#)

[March 9-11, 2026](#)

[Atlanta, GA](#)

## [2026 AACI/AACR Hill Day](#)

[SAVE THE DATE](#)

[May 14, 2026](#)

[Washington, DC](#)

## [18th Annual AACI Clinical Research Innovation \(CRI\) Meeting](#)

[SAVE THE DATE](#)

[June 23-25, 2026](#)

[Rosemont, IL](#)

## [2026 AACI/CCAF Annual Meeting](#)

[SAVE THE DATE](#)

[October 25-27, 2026](#)

[Chicago, IL](#)

Copyright 2026 | Association of American Cancer Institutes



PO Box 7317  
Pittsburgh, PA 15213

FOLLOW US



Share This Email



Share This Email



Share This Email

Association of American Cancer Institutes (AACI) | 322 North Shore Dr Bldg 1B Ste 200 | Pittsburgh, PA 15212 US

[Unsubscribe](#) | [Update Profile](#) | [Constant Contact Data Notice](#)



Try email marketing for free today!