

Some email communications may be filtered to your Spam or Junk folder, even if you have subscribed to them. Please mark aaciupdate@aaci-cancer.ccsend.com as a Safe Sender to ensure that AACI emails are delivered to your inbox.

News From the Association of American Cancer Institutes | April 2026

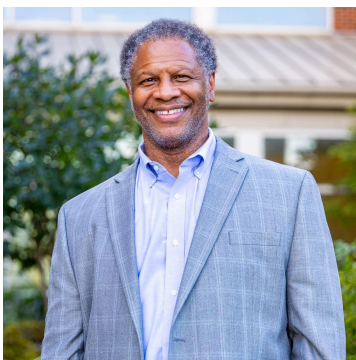
[Click here](#) to read the full newsletter on our website.



[Awards & Honors](#) | [Grants & Gifts](#) | [Leadership Transitions](#) | [Research Highlights](#) | [Other News](#)
[Job Opportunities](#) | [Meeting Announcements](#)

AACI HEADLINES

[Winn Named New Director of Fox Chase Cancer Center](#)



Robert A. Winn, MD, has been appointed the next cancer center director for Fox Chase Cancer Center, Temple Health. Dr. Winn is known for pioneering a "community-to-bench" model that integrates community perspectives into scientific discovery and for founding the Robert A. Winn Diversity in Clinical Trials Award Program. He is AACI's immediate past president and currently serves as director of VCU Massey Comprehensive Cancer Center. [Read More](#)

[Dartmouth Cancer Center Appoints Herbst as Next Leader](#)



Dartmouth Cancer Center has appointed **Roy S. Herbst, MD, PhD**, as the center's sixth director. Herbst will lead integrated efforts to help strengthen cancer research, education, and collaboration across Dartmouth and Dartmouth Health, expand access to advanced treatments and clinical trials, and continue to elevate cancer care in southern New Hampshire, throughout New England, and beyond. [Read More](#)

['Healthy Humorist' to Keynote CRI Meeting](#)

Open up and say "Ha!" The Healthy Humorist® **Brad Nieder, MD, CSP** ("Dr. Brad"), will deliver the opening keynote of the [18th Annual AACI Clinical Research Innovation \(CRI\) Meeting](#). Described as "Jerry Seinfeld with an MD," Dr. Brad is a doctor, clean comedian, and public speaker who uses humor to educate and inspire. His keynote is scheduled for **Tuesday, June 23** at 12:30 pm central time. [Read More](#)



[New AACI Report Highlights Importance of State Investment in Cancer Research](#)



In collaboration with [Dant Advocacy](#), AACI has released a new report highlighting the critical role that state governments play in advancing cancer research, supporting innovation, and improving patient outcomes nationwide. [State-Funded Cancer Research](#) documents the impacts of state investments, which include strengthening local economies, supporting workforce development, and expanding access to clinical trials. [Read More](#) | [Read the Report](#)

[AACI Brings Cancer Policy Community Together for Key Federal Research Discussions](#)



Government relations professionals from AACI cancer centers and partner organizations gathered in Washington, DC, for timely discussions that focused on the federal landscape for cancer research, including National Institutes of Health priorities, appropriations, and ongoing policy developments. [Read More](#)

NEWS FROM THE CENTERS

AWARDS & HONORS

[Halpern-Felsher to Receive ASPO Award](#)

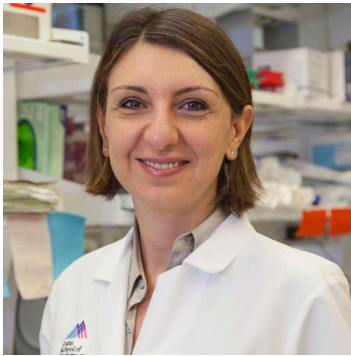
[Stanford Cancer Institute](#)



Bonnie Halpern-Felsher, PhD, will be awarded the Joseph W. Cullen Memorial Award at the 2026 American Society of Preventive Oncology (ASPO) Meeting. She is being honored for her distinguished achievement in national tobacco control interventions. [Read More](#)

[International Society for Experimental Hematology Recognizes Papapetrou](#)

[Mount Sinai Tisch Cancer Center](#)



Eirini Papapetrou, MD, PhD, was selected as the 2026 recipient of the McCulloch and Till Award from the International Society for Experimental Hematology (ISEH). Dr. Papapetrou is recognized for her achievements in leveraging induced pluripotent stem cells to model and study the mechanisms of myelodysplasia and acute myeloid leukemia. She was also elected to the 2026-2027 Board of Directors of ISEH. [*Read More*](#)

[Fox Chase Researcher Recognized for Computational Biology Work](#)

[Fox Chase Cancer Center, Temple Health](#)



Roland L. Dunbrack, Jr., PhD, founding director of the Fox Chase Molecular Modeling Facility, has been honored with the 2026 DeLano Award for Computational Biosciences from the American Society for Biochemistry and Molecular Biology. [*Read More*](#)

[Stewart Elected to AACR Board of Directors](#)

[Siteman Cancer Center](#)



Sheila A. Stewart, PhD, associate director for basic science at Siteman Cancer Center, has been elected to the American Association for Cancer Research Board of Directors. As a cancer biologist, Dr. Stewart studies how noncancerous cells, known as stroma, in tumors promote the development of cancer. [*Read More*](#)

[American Cancer Society's Partner of the Year: UF Health](#)

[UF Health Cancer Institute](#)

The University of Florida Health system has received the American Cancer Society's Health System Partner of the Year award for its innovative, collaborative approaches to enhancing cancer prevention, early detection, medical care, and quality of life for cancer patients and their families. It's one of only two health systems nationwide that received the honor. [*Read More*](#)

GRANTS & GIFTS

[Researcher Receives Funding to Crack the Dark Proteome of Cancer](#)

[University of Michigan Rogel Cancer Center](#)

[Consortium Seeks Cure for Hepatitis B Thanks to \\$24 Million Federal Research Grant](#)

[Sidney Kimmel Comprehensive Cancer Center at Johns Hopkins University](#)

[\\$3 Million NCI Award to Develop Next Generation of Cancer Researchers](#)

[University of Maryland Marlene and Stewart Greenebaum Comprehensive Cancer Center](#)

[Can AI Help Predict Outcomes in Ovarian Cancer?](#)

[University of Michigan Rogel Cancer Center](#)

[Roswell Park Brings Lung Health Care Initiative to Indigenous Communities](#)

[Roswell Park Comprehensive Cancer Center](#)

LEADERSHIP TRANSITIONS

[Baskin Named Interim Director](#)

[VCU Massey Comprehensive Cancer Center](#)



Monica L. Baskin, PhD, will serve as the interim director of VCU Massey Comprehensive Cancer Center. Dr. Baskin is the deputy director of research at Massey and associate dean for cancer innovation in the VCU School of Medicine, with appointments as professor in the Department of Internal Medicine and the VCU School of Public Health.

[Read More](#)

[El-Rayes Appointed Deputy Director](#)

[UC San Diego Moores Cancer Center](#)



The Moores Cancer Center at UC San Diego Health announces the appointment of **Bassel F. El-Rayes, MD**, as deputy director. He joins UC San Diego from the University of Alabama at Birmingham, where he served as deputy cancer center director. [Read More](#)

[Moore Named Deputy Director](#)

[Fred & Pamela Buffett Cancer Center](#)

The Fred & Pamela Buffett Cancer Center has appointed **Kathleen Moore, MD**, as deputy director and director of Phase I oncology trials. Dr. Moore is an internationally recognized leader in gynecologic oncology, known for her contributions to early-phase clinical trials and cancer research program development. [Read More](#)



[Cortes Joins Division of Hematology and Oncology](#)

[UC San Diego Moores Cancer Center](#)



UC San Diego Moores Cancer Center announces that **William "Bill" Gentz** has joined the center as associate director of administration. He has held key administrative roles at Scripps Research, UC San Diego, Johns Hopkins University, and Massachusetts General Hospital, where he led large teams supporting complex research portfolios, financial compliance, facilities oversight, and strategic process improvement.

[Read More](#)

[Gentz Welcomed as Associate Director of Administration](#)

[UC San Diego Moores Cancer Center](#)



UC San Diego Moores Cancer Center announces that **William "Bill" Gentz** has joined the center as associate director of administration. He has held key administrative roles at Scripps Research, UC San Diego, Johns Hopkins University, and Massachusetts General Hospital, where he led large teams supporting complex research portfolios, financial compliance, facilities oversight, and strategic process improvement.

[Read More](#)

RESEARCH HIGHLIGHTS

[Previously Unrecognized Immune Response Could Enhance Defense Against Cancer](#)

[Dan L Duncan Comprehensive Cancer Center at Baylor College of Medicine](#)

[Study Maps U.S. Diabetes-Cancer Hotspots](#)

[UK Markey Cancer Center](#)

[Severe COVID-19, Flu Facilitate Lung Cancer Months or Years Later](#)

[University of Virginia Cancer Center](#)

[New Therapy Combines Imaging and Targeted Radiation to Treat Aggressive Bone Cancer](#)

[UCLA Jonsson Comprehensive Cancer Center](#)

[Scientists Discover an Unexpected Food Source for Tumors](#)

[Wilmot Cancer Institute, UR Medicine](#)

[Gastrointestinal Cancers to Double by 2050](#)

[Cedars-Sinai Cancer](#)

[Illegal E-Cigarettes Promoted on Instagram Exposed by Researchers](#)

[UAMS Winthrop P. Rockefeller Cancer Institute](#)

[Researchers Identify Clotting Protein as Potential Target in Pancreatic Cancer](#)

[Indiana University Melvin and Bren Simon Comprehensive Cancer Center](#)

[Study Expands Pesticide Risk Window to Before Pregnancy](#)

[Indiana University Melvin and Bren Simon Comprehensive Cancer Center](#)

[Investigators Create Open-Source Database to Study Cancer More Easily](#)

[Sidney Kimmel Comprehensive Cancer Center at Johns Hopkins University](#)

[Molecular Vulnerability in Rare Childhood Brain Cancer Revealed](#)

[Fred Hutch Cancer Center](#)

[Study May Help Cancer Patients Keep Their Bladder](#)

[Mount Sinai Tisch Cancer Center](#)

[Can Exercise Help Chemo Brain? New Research Adds Promising Results](#)

[Wilmot Cancer Institute, UR Medicine](#)

[Researchers Study Immune System Response to Chemotherapy for Colorectal Cancer](#)

[Duke Cancer Institute](#)

[Researchers Engineer CAR T Cells to Target Hard-to-Treat Solid Tumors](#)

[UCLA Jonsson Comprehensive Cancer Center](#)

[Scientists Create Cancer-Fighting Immune Cells Right in the Body](#)

[UCSF Helen Diller Family Comprehensive Cancer Center](#)

[Analysis Highlights Untapped Potential of RNA Vaccines](#)

[University of Virginia Cancer Center](#)

[New Regimen Protects Against Cancer Relapse, Graft-Versus-Host Disease After Donor Stem Cell Transplant](#)

[Roswell Park Comprehensive Cancer Center](#)

[Additional Radiation for Liver Cancer Does Not Increase Toxicity](#)

[University of Cincinnati Cancer Center](#)

[AI-Powered Platform May Enable Same-Day Treatment Decisions for Pediatric Patients](#)

[Huntsman Cancer Institute at the University of Utah](#)

[New AI Tool Predicts Best Pancreatic Cancer Treatment](#)

[Cedars-Sinai Cancer](#)

[Study Shows Smoking Cessation Can Become Standard Cancer Care Nationwide](#)

[UK Markey Cancer Center](#)

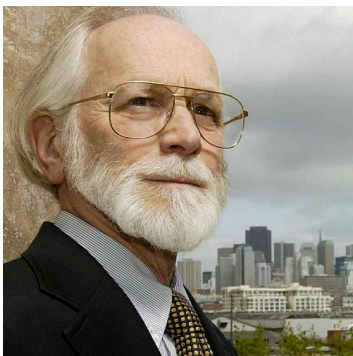
[Tracking Unique Metabolic Signatures in Cancer Cells](#)

[Stanford Cancer Institute](#)

OTHER NEWS

[In Memoriam: Michael Bishop, Nobel-Winning Cancer Researcher](#)

[UCSF Helen Diller Family Comprehensive Cancer Center](#)



J. Michael Bishop, MD, a pioneering microbiologist who shared the 1989 Nobel Prize in Physiology or Medicine for discovering that every cell in the body harbors genes that can cause cancer, has died at the age of 90. The former UCSF chancellor helped to establish cancer as a genetic disease, ushering in the modern age of cancer biology. [Read More](#)

[Startup Translates Academic Innovation Into a Breakthrough for Safer Proton Therapy](#)

[University of Cincinnati Cancer Center](#)



A University of Cincinnati spinout, Range Assure, is bringing to market a patented, next-generation calibration technology that directly addresses proton therapy's most persistent limitation: range uncertainty. The innovation emerged from university-led research and was advanced through a structured technology transfer pathway, including patent protection, accelerator support, and early-stage grant funding. [Read More](#)

[New Bus Brings 'HOPE' on Wheels](#)

[The University of Kansas Cancer Center](#)



The University of Kansas Cancer Center and its outreach network, the Masonic Cancer Alliance, have announced a new effort to provide cancer screening throughout the cancer center's catchment area. Known as HOPE on Wheels: Health Outreach, Prevention and Education, a 42-foot bus will help ensure that geography isn't a barrier to detecting cancers earlier. [Read More](#)

JOB OPPORTUNITIES

[Endowed Chair, Nursing Oncology](#)

[Wilmot Cancer Institute, UR Medicine](#)

[Senior Director of Information Technology](#)

[Huntsman Cancer Institute at the University of Utah](#)

[Clinical Research Project Manager II](#)

[Fred Hutch Cancer Center](#)

[Director, UF Health Cancer Institute and Physician-in-Chief, UF Health Shands Cancer Hospital](#)

[UF Health Cancer Institute](#)

[Hematology/Oncology - Solid Tumor Faculty](#)

[Case Comprehensive Cancer Center](#)

[Pediatric Oncology and Cellular Therapy Physician Scientist](#)

[Hollings Cancer Center, Medical University of South Carolina](#)

[Associate Director for Administration](#)

[Case Comprehensive Cancer Center](#)

[Chair, Department of Radiation Oncology](#)

[UC Davis Comprehensive Cancer Center](#)

MEETINGS & EVENTS

[2026 AACI/AACR Hill Day](#)

[REGISTER TODAY](#)

[May 14, 2026](#)

[Washington, DC](#)

[Rural Health and Cancer Conference](#)

[REGISTER TODAY](#)

[June 2, 2026](#)

[Burlington, VT](#)

[18th Annual AACI Clinical Research Innovation \(CRI\) Meeting](#)

[REGISTER TODAY](#)

[June 23-25, 2026](#)

[Rosemont, IL](#)

[2026 AACI/CCAF Annual Meeting](#)

[SAVE THE DATE](#)

[October 25-27, 2026](#)

[Chicago, IL](#)

Copyright 2026 | Association of American Cancer Institutes




322 North Shore Drive
Building 1B, Suite 200, #362
Pittsburgh, PA 15212-5875

FOLLOW US



 Share This Email

 Share This Email

 Share This Email

Association of American Cancer Institutes (AACI) | 322 North Shore Dr Bldg 1B Ste 200, #362 | Pittsburgh, PA 15212-5875 US

[Unsubscribe](#) | [Update Profile](#) | [Constant Contact Data Notice](#)



Try email marketing for free today!