

Some email communications may be filtered to your Spam or Junk folder, even if you have subscribed to them. Please mark aaciupdate@aaci-cancer.ccsend.com as a Safe Sender to ensure that AACI emails are delivered to your inbox.

News From the Association of American Cancer Institutes | April 2022

[Click here](#) to read the full newsletter on our website.



[Awards & Honors](#) | [Grants & Gifts](#) | [Leadership Highlights](#) | [Research Highlights](#) | [Other News & COVID-19](#)
[Job Opportunities](#) | [Meeting Announcements](#)

AACI HEADLINES

[Jefferson Health Names New Cancer Center Director](#)



Jefferson Health has named **Andrew Chapman, DO, FACP**, director of the Sidney Kimmel Cancer Center and executive vice president of oncology services. Dr. Chapman has been serving as the center's interim director since last year. He began his new position March 15. Jefferson Health President **Bruce Meyer, MD**, noted that Dr. Chapman's "breadth of experience and expertise, dedication to patient care and success in cancer research made him the ideal fit for this critical role." [Read More](#)

[Registration Now Open for AACI/AACR Hill Day](#)



Registration is now open for the **2022 AACI/AACR Hill Day**, scheduled for **Wednesday, June 15**. Participation in the virtual Hill Day is critical to sharing our message with legislators: that stable, predictable funding increases are essential to advancing research and care at our nation's cancer centers, and a bipartisan commitment to cancer research is saving and improving millions of lives. [Read More](#)

[CRI Meeting Registration Open, Program Ads Available](#)

Registration is open for the **14th Annual AACI Clinical Research Innovation (CRI) Meeting**, which will be held **July 12-14** at the Loews Chicago O'Hare Hotel in Rosemont, IL. This year's meeting theme, "Partnering in Progress," aligns with CRI's strategic goal of stimulating cancer center interactions to maximize resources by creating opportunities for peer-to-peer networking and collaboration. Cancer



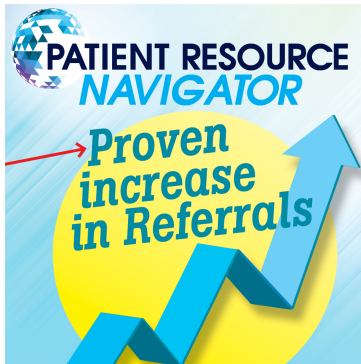
centers are also invited to support the meeting by purchasing an ad in the program. [Read More](#)

[Mesa Delivers Testimony on Clinical Trial Diversity](#)



On March 17, **Ruben A. Mesa, MD**, participated in a House Energy and Commerce committee hearing, titled "**The Future of Medicine: Legislation to Encourage Innovation and Improve Oversight.**" The hearing was focused on 22 pieces of legislation to boost biomedical research and innovation, diversify clinical trials, and improve program integrity at the U.S. Food and Drug Administration. Dr. Mesa is a member of AACI's Board of Directors and executive director of Mays Cancer Center at UT Health San Antonio MD Anderson. [Read More](#)

[Patient Resource: an Integral Physician Outreach Tool](#)



Influence of *Patient Resource* on referrals

- Over a 3-year period, one cancer center shares a 12% increase of patient referrals year-over-year
- With more than 48,000 patients surveyed, 83% state that the personalized guides influence their positive recommendation of cancer center to friends & family

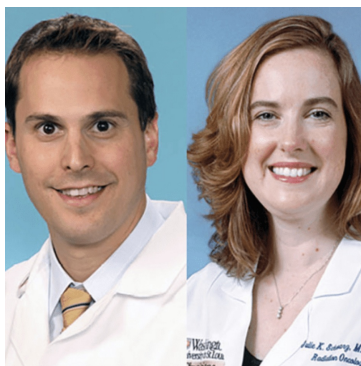
For more information, contact [Amy Galey](#). [Learn More](#)

NEWS FROM THE CENTERS

AWARDS & HONORS

[Researchers Elected to American Society for Clinical Investigation](#)

[Siteman Cancer Center](#)



Two Washington University physician-scientists at Siteman Cancer Center have been elected members of the American Society for Clinical Investigation. **Kory Lavine, MD, PhD**, and **Julie K. Schwarz, MD, PhD**, will be inducted April 8. [Read More](#)

[Hirsch Receives Hansen Award](#)



Fred Hirsch, MD, PhD, received the 2022 Heine H. Hansen Award from the European Society for Medical Oncology in recognition of his lifelong outstanding contribution to lung cancer research. Dr. Hirsch delivered his award lecture on March 30 at the 2022 European Lung Cancer Conference. [Read More](#)

[Jeffery Named AAAS Fellow](#)

[University of Illinois Cancer Center](#)



University of Illinois Cancer Center member **Constance Jeffery, PhD**, has been named a fellow by the American Association for the Advancement of Science (AAAS). She was honored for pioneering contributions to the understanding of multifunctional proteins and outstanding contributions to the training and mentoring of junior scientists. [Read More](#)

[Cellular Therapy Program Receives Accreditation](#)

[WVU Cancer Institute](#)

The WVU Cancer Institute Cellular Therapy Program was recently awarded its sixth consecutive Foundation for the Accreditation of Cellular Therapy (FACT) reaccreditation for blood and marrow transplant and first FACT accreditation for immune effector cell therapy (CAR T). [Read More](#)

[Irish PM Honors McDonnell With National Science Medal](#)

[Duke Cancer Institute, Duke University Medical Center](#)



Donald McDonnell, PhD, associate director for translational research, Duke Cancer Institute, was awarded the Science Foundation Ireland St. Patrick's Day Science Medal for his work in the development of new treatments for breast and prostate cancers. Taoiseach (Irish Prime Minister) Micheál Martin TD presented the award in person to McDonnell at a ceremony in Washington, DC. [Read More](#)

[Li Receives Endowed Chair for Breast Cancer Research](#)

[Fred Hutchinson Cancer Research Center](#)

Fred Hutchinson Cancer Research Center epidemiologist **Christopher Li, MD, PhD**, was recently selected as the inaugural recipient of the Helen G. Edson Endowed Chair for Breast Cancer Research. Since joining the Hutch faculty in 2002, Dr. Li has studied connections between breast cancer and lifestyle factors as well as ways to overcome health care disparities. [Read More](#)



[Pietenpol, Shyr Named AACR Fellows](#)

[Vanderbilt Ingram Cancer Center](#)



The American Association for Cancer Research (AACR) has inducted **Jennifer Pietenpol, PhD**, and **Yu Shyr, PhD**, into the 2022 class of Fellows of the AACR Academy. [Read More](#)

GRANTS & GIFTS

[Wistar to Be Renamed With \\$10 Million Gift From Caplan Family](#)

[Ellen and Ronald Caplan Cancer Center of The Wistar Institute](#)

[Multi-Million Dollar Gift Invests in Expansion of Patient Care](#)

[UK Markey Cancer Center](#)

[American Cancer Society Funds Cancer Health Equity Research Center](#)

[University of Illinois Cancer Center](#)

[\\$3.5 Million Grant to Harness Big Data to Help Hodgkin Lymphoma Patients](#)

[Rutgers Cancer Institute of New Jersey](#)

[Stand Up to Cancer and Southeastern Cancer Centers Fight Racial Inequities in Lung Cancer](#)

[VCU Massey Cancer Center](#)

[Prevent Cancer Foundation Grant to Focus on Cervical Cancer Disparities](#)

[Fox Chase Cancer Center, Temple Health](#)

LEADERSHIP TRANSITIONS

[New Deputy Director to Lead Research Initiatives, Organizational Strategy](#)

[WVU Cancer Institute](#)

The WVU Cancer Institute has named **Courtney DeVries, PhD**, as the



new deputy director effective Monday, March 14. She will help lead research initiatives within the Institute. Dr. DeVries joined WVU from Ohio State University, where she was a professor of neuroscience. [Read More](#)

[Komanduri Named Chief of Hematology-Oncology](#)

[UCSF Helen Diller Family Comprehensive Cancer Center](#)



Krishna Komanduri, MD, has been named the new chief of the Division of Hematology-Oncology at UCSF Health. Dr. Komanduri will also assume two newly created roles on July 1: physician-in-chief of the Helen Diller Family Comprehensive Cancer Center and clinical director of the UCSF Living Therapeutics Initiative. [Read More](#)

[Blank is New President of the Society of Gynecologic Oncology](#)

[The Tisch Cancer Institute at Mount Sinai](#)



Stephanie Blank, MD, associate director of women's cancer for The Tisch Cancer Institute at Mount Sinai, has taken on the role of president of the Society of Gynecologic Oncology. She most recently served as a president-elect of the professional organization, which advances the prevention, early diagnosis, and treatment of gynecologic cancers. [Read More](#)

[Graves Joins Sylvester as Assistant Vice President and Associate Director for Administration](#)

[Sylvester Comprehensive Cancer Center, University of Miami Health System](#)



Dorothy Graves, PhD, has been appointed assistant vice president and associate director for administration at Sylvester Comprehensive Cancer Center. She spent five years in her previous leadership role as associate director for administration at UAMS Winthrop P. Rockefeller Cancer Institute. [Read More](#)

[Ragin Named Associate Director of Diversity, Equity, and Inclusion](#)

[Fox Chase Cancer Center, Temple Health](#)

Fox Chase Cancer Center has appointed **Camille Ragin, PhD, MPH**, as associate director of Diversity, Equity, and Inclusion (DEI). In this newly



created role, Dr. Ragin will be responsible for enhancing hiring practices to encourage diversity, facilitating more diverse leadership at all levels of the institution, providing training and education on race-related issues to the community, and facilitating collaboration. [Read More](#)

[Elevated Expertise](#)

[University of New Mexico Comprehensive Cancer Center](#)



Surgical oncologist **Itzhak Nir, MD**, is the founding chief of the new Division of Hepato-Pancreatico-Biliary (HPB) Surgery in the UNM Department of Surgery. The division is housed at UNM Comprehensive Cancer Center and provides state-of-the-art care for liver, pancreas and bile duct-gall bladder diseases. [Read More](#)

[Bandera Named Unilever Chair for the Study of Diet and Nutrition in the Prevention of Chronic Disease](#)

[Rutgers Cancer Institute of New Jersey](#)



The Rutgers University Board of Governors voted to approve **Elisa Bandera, MD, PhD**, an internationally recognized expert in nutrition and cancer epidemiology, as the Unilever Chair for the Study of Diet and Nutrition in the Prevention of Chronic Disease at the Rutgers Cancer Institute of New Jersey. [Read More](#)

[Major Leadership Changes Announced](#)

[Albert Einstein Cancer Center, Albert Einstein College of Medicine](#)



Albert Einstein Cancer Center has announced the appointment of three faculty members to key leadership positions, including new deputy director **Ulrich Steidl, MD, PhD**, reflecting the center's commitment to basic science, translational, and clinical research and its core principles of diversity, equity, and inclusion. [Read More](#)

RESEARCH HIGHLIGHTS

[New Insights Into How Tumors Metabolically Adapt to Their](#)

[Environment](#)

[The University of Chicago Medicine Comprehensive Cancer Center](#)

[Surprise Discovery Suggests New Treatment for Small-Cell Lung Cancer](#)

[University of Virginia Cancer Center](#)

[At-Home Screening Program Aims to Reduce Colorectal Cancer Rates in Black Community](#)

[The Ohio State University Comprehensive Cancer Center - James Cancer Hospital and Solove Research Institute](#)

[Higher Frequency of Blood Mutations in WTC First Responders](#)

[Albert Einstein Cancer Center, Albert Einstein College of Medicine](#)

[Molecule That Kills Pancreatic Cancer Cells Discovered](#)

[Roswell Park Comprehensive Cancer Center](#)

[Mutation Matchmaking](#)

[University of New Mexico Comprehensive Cancer Center](#)

[Research Reveals a New Class of Oncogenic Fusions in Lung and Pancreatic Cancer](#)

[Yale Cancer Center, Yale School of Medicine](#)

[The Tie Between Taste Bud Receptors and Colorectal Cancer](#)

[The University of Kansas Cancer Center](#)

[FDA Approves New Immunotherapy Regimen for Melanoma Based on Hopkins Research](#)

[Sidney Kimmel Cancer Center at Johns Hopkins University](#)

[Novel Treatment Makes Pancreatic Cancer Susceptible to Immunotherapy](#)

[Siteman Cancer Center](#)

[Study Tests Drug That Targets Tumor Microenvironment](#)

[The University of Kansas Cancer Center](#)

[Computational Approach Enables Spatial Mapping of Single-Cell Data Within Tissues](#)

[The University of Texas MD Anderson Cancer Center](#)

[For Glioblastoma, a New Clinical Trial Fosters Innovation and Hope](#)

[University of Michigan Rogel Cancer Center](#)

[New Pathogenic Mechanism in Hematological Malignancies Discovered](#)

[Yale Cancer Center, Yale School of Medicine](#)

[Researchers Identify Gene That Predicts Breast Cancer Patient Treatment Outcomes](#)

[Roswell Park Comprehensive Cancer Center](#)

[Study Estimates One in Seven U.S. Breast Cancers May Be Over-](#)

[Diagnosed](#)

[Duke Cancer Institute, Duke University Medical Center](#)

[Treating Tough Tumors by Exploiting Their Iron Addiction](#)

[UCSF Helen Diller Family Comprehensive Cancer Center](#)

[Analysis: Impact of Chronic Lower Extremity Lymphedema on Older Female Cancer Survivors](#)

[The Ohio State University Comprehensive Cancer Center - James Cancer Hospital and Solove Research Institute](#)

[Scientists Target Protein to Lower Risk of Prostate Cancer Spread](#)

[Cedars-Sinai Cancer](#)

[Skin Cancer Cells Use an Alzheimer's Disease Protein to Sabotage Immune Defenses](#)

[Laura and Isaac Perlmutter Cancer Center at NYU Langone](#)

[Study Finds Cancer Treatment Creates Employment Difficulties for Some Rural Women](#)

[UAMS Winthrop P. Rockefeller Cancer Institute](#)

[Long-Elusive Structure of Key Cellular-Signaling Molecule Found](#)

[Stanford Cancer Institute](#)

[New Methods Outlined to Identify Personalized Drug Treatments for Breast Cancer](#)

[Huntsman Cancer Institute, University of Utah](#)

[Promising Approach Against Treatment-Resistant Cancer](#)

[Albert Einstein Cancer Center, Albert Einstein College of Medicine](#)

[Study: Art at the Bedside of Cancer Patients is Good Medicine](#)

[Wilmot Cancer Institute, UR Medicine](#)

[Cerebrospinal Fluid May Be Able to Identify Aggressive Brain Tumors in Children](#)

[Sidney Kimmel Comprehensive Cancer Center at Johns Hopkins University](#)

[Cancer Drugs Might Be Able to Target Tuberculosis, Study Finds](#)

[Stanford Cancer Institute](#)

[Study Examines Kentucky Lung Cancer Disparities](#)

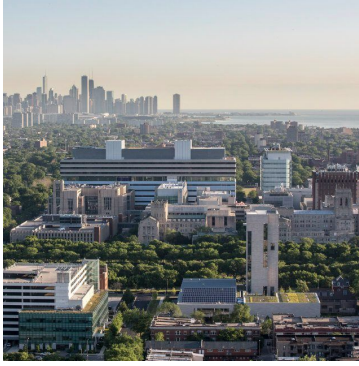
[UK Markey Cancer Center](#)

OTHER NEWS & COVID-19

[First Freestanding Cancer Center in Chicago Proposed](#)

[The University of Chicago Medicine Comprehensive Cancer Center](#)

The University of Chicago Medicine plans to build a \$633 million, 500,000-square-foot facility dedicated to cancer care on its medical campus on the city's South Side. **Kunle Odunsi, MD, PhD**, is center director. *Photo: Tom Rossiter. [Read More](#)*



[Crowdfunding Helps Pay the Bills During Cancer, But at a Price](#)

[University of Michigan Rogel Cancer Center](#)

Crowdfunding has become a means for people with cancer to get help managing the financial impact of their disease. But while there's relief in paying bills, a new study finds that it comes at a cost: a sense of shame and stigma from asking for help and revealing personal health details. The issue is particularly critical for young adults with cancer, an understudied group that faces distinct needs. [*Read More*](#)

[An Advanced Monitoring Platform Enhances Safety, Precision in Spine Tumor Treatment](#)

[Laura and Isaac Perlmutter Cancer Center at NYU Langone](#)

The Brain and Spine Tumor Center at NYU Langone's Perlmutter Cancer Center is now using ExacTrac Dynamic, a patient positioning and monitoring system that helps the spine tumor team address the challenge of patient movement during stereotactic body radiation therapy. [*Read More*](#)

JOB OPPORTUNITIES

[Administrative Officer - Research](#)

[Vanderbilt-Ingram Cancer Center](#)

[Clinical Research Monitor](#)

[Memorial Sloan Kettering Cancer Center](#)

[Clinical Research Data Analyst](#)

[Sidney Kimmel Cancer Center at Jefferson Health](#)

[Associate Director of Administration](#)

[Legorreta Cancer Center at Brown University](#)

[Faculty Position - Precision Medicine](#)

[Fred Hutchinson Cancer Research Center](#)

[Manager of Administrative Services](#)

[Dartmouth-Hitchcock Norris Cotton Cancer Center](#)

[Multiple Positions](#)

[The University of Arizona Cancer Center](#)

[Regulatory Coordinator](#)

[Duke Cancer Institute, Duke University Medical Center](#)

[Research Nurse Coordinator II - Cancer Clinical Trials Office](#)

[Cedars-Sinai](#)

[Clinical Research Supervisor](#)

[Memorial Sloan Kettering Cancer Center](#)

[Associate Dean, Research and Clinical Trials](#)

[Cedars-Sinai](#)

[Associate Director of Diversity, Equity, and Inclusion](#)

[OHSU Knight Cancer Institute](#)

[Associate Director, Education & Training](#)

[Duke Cancer Institute, Duke University Medical Center](#)

[Clinical Research Associate](#)

[Memorial Sloan Kettering Cancer Center](#)

[Manager, Data Analytics](#)

[UCI Chao Family Comprehensive Cancer Center](#)

MEMBER MEETING ANNOUNCEMENTS

[Equity by Design in Clinical Research: Cancer Trials](#)

WEBINAR SERIES [Dana-Farber Cancer Institute, Harvard Medical School](#)

[April 5 & 14, 2022](#)

[Annual Midwest Tumor Microenvironment Meeting](#)

[University of Kansas Medical Center](#)

[May 23-25, 2022](#)

[LGBTQ+ Cancer Symposium](#)

[Sofitel Los Angeles at Beverly Hills](#)

[June 2-3, 2022](#)

AACI MEETINGS AND EVENTS

[2022 AACI/AACR Hill Day](#)

REGISTER TODAY

[June 15, 2022](#)

[14th Annual AACI CRI Meeting](#)

REGISTER TODAY

[July 12-14, 2022](#)

[Loews Chicago O'Hare Hotel](#)

[Rosemont, IL](#)

[2022 AACI/CCAF Annual Meeting](#)

SAVE THE DATE

[October 2-4, 2022](#)

[InterContinental at the Plaza](#)

[Kansas City, MO](#)



Medical Arts Building
3708 Fifth Avenue, Suite 503
Pittsburgh, PA 15213
412-647-6111

FOLLOW US



Copyright 2021 | Association of American Cancer Institutes

Association of American Cancer Institutes (AACI) | Medical Arts Building, 3708 Fifth Avenue,
Suite 503, Pittsburgh, PA 15213

[Unsubscribe aaciupdate@aaci-cancer.org](mailto:unsubscribe_aaciupdate@aaci-cancer.org)

[Update Profile](#) | [Constant Contact Data Notice](#)

Sent by aaciupdate@aaci-cancer.org powered by



Try email marketing for free today!