



[Awards & Honors](#) | [Grants & Gifts](#) | [Leadership Transitions](#) | [Research Highlights](#) | [Other News](#)

## AACI HEADLINES

### Champion for Cures Award to Recognize Jon M. and Karen Huntsman Family



The **Jon M. and Karen Huntsman** family will receive AACI's 2019 **Champion for Cures Award**, in recognition of its significant leadership in supporting efforts to cure cancer and in inspiring others to do the same. The Huntsman family's first major gift to cancer research came in 1993 at \$10 million, followed by a \$100 million gift in 1995 that formally established and named the Huntsman Cancer Institute (HCI) at the University of Utah. In all, the family has donated or inspired donations totaling \$1.4 billion to cancer. [Read More](#)

### CRI Meeting Spotlight: Ciolino to Present on Changes to CCSG



**Henry Ciolino, PhD**, director of the office of cancer centers at the National Cancer Institute (NCI), will participate in a panel session at the **11th Annual AACI CRI Meeting** that will highlight the NCI's Cancer Center Support Grant (CCSG) submission guidelines and best practices for preparing a CCSG application. Dr. Ciolino will present on defining a cancer center's catchment area, community outreach and engagement, and the updated funding opportunity announcement (FOA) that will go into effect in January 2020. [Read More](#)

### AACI to Co-Host Congressional Briefing on HPV-Related Cancers

AACI is among eight partner organizations that will co-host a congressional briefing from 12:00 to 1:30 pm on Thursday, June 27. The briefing will provide an overview of the global impact of cancers related to human papillomavirus (HPV) and opportunities to reduce the burden of these cancers, both in the U.S. and worldwide. [Read More](#)

## NEWS FROM THE CENTERS

## Rosen Inducted Into Association of American Physicians

City of Hope Comprehensive Cancer Center

---

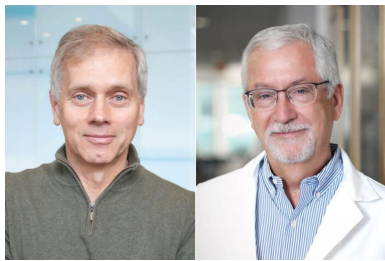


City of Hope Provost and Chief Scientific Officer **Steven T. Rosen, MD**, has been inducted as a member of the Association of American Physicians (AAP). Dr. Rosen is a leader in the field of hematologic malignancies and has spent more than three decades improving treatment in myeloma, leukemia, and lymphoma. [Read More](#)

## Colonna, Ley Elected to National Academy of Sciences

Siteman Cancer Center

---



Two physician-scientists at Washington University School of Medicine in St. Louis and Siteman Cancer Center were elected to the National Academy of Sciences, one of the highest honors that can be awarded to a U.S. scientist or engineer. **Marco Colonna, MD**, and **Timothy J. Ley, MD**, were among the 100 new members and 25 foreign associates elected to the academy this year. [Read More](#)

## Urology Professor Elected to National Association

UCLA Jonsson Comprehensive Cancer Center

---

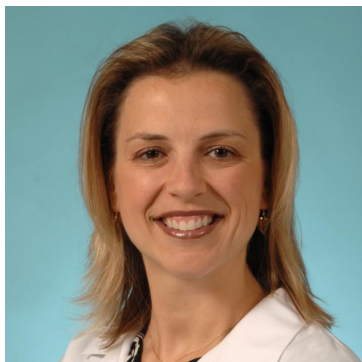


**Christopher Saigal, MD**, professor of urology in the David Geffen School of Medicine at UCLA, has been elected to the American Association of Genitourinary Surgeons in recognition of his accomplishments in the field. Dr. Saigal's research in the field of shared decision making for prostate cancer focuses on empowering men to make informed treatment choices with which they're more satisfied. [Read More](#)

## Margenthaler is President-Elect of The American Society of Breast Surgeons

Siteman Cancer Center

---



**Julie Margenthaler, MD**, a Washington University professor of surgery at Siteman Cancer Center, has been named president-elect of The American Society of Breast Surgeons. She will serve in the role until 2020, when she becomes president of the organization. Dr. Margenthaler has served as treasurer since 2017. [Read More](#)

## Foundation Honors Native American Researcher



Roswell Park Comprehensive Cancer Center faculty researcher **Rodney Haring, PhD, MSW**, has been recognized with a Research Into Action Award from the Robert Wood Johnson Foundation's New Connections initiative. The award symbolizes what Dr. Haring has accomplished as a New Connections grantee, including a project in 2010 that looked at childhood obesity and oral health within Native American communities. [Read More](#)

## AACR Taps Knudsen for Board of Directors

Sidney Kimmel Cancer Center at Jefferson Health

---



The members of the American Association for Cancer Research (AACR) have elected **Karen E. Knudsen, PhD**, executive vice president of Oncology Services and enterprise director of the Sidney Kimmel Cancer Center at Jefferson Health, to its Board of Directors. Dr. Knudsen is one of five world-renowned cancer researchers elected to the board for the 2019-2022 term. [Read More](#)

## Researchers Appointed to National Scientific Leadership Roles

Huntsman Cancer Institute, University of Utah

---



Huntsman Cancer Institute CEO, **Mary Beckerle, PhD**, and HCI's Senior Director of Pre-Clinical Translation, **Martin McMahon, PhD**, have been appointed to prominent advisory group positions within the National Institutes of Health. [Read More](#)

## GRANTS & GIFTS

### Grant Awarded for Cancer Health Equity Center

University of Florida Health Cancer Center

---

### Project to Eradicate Hepatitis C in Kentucky County Gets \$15 Million Grant

UK Markey Cancer Center

---

### Cervical Cancer Prevention Aim of New \$11 Million Grant

The Ohio State University Comprehensive Cancer Center, James Cancer Hospital and Solove Research Institute

---

### Over \$5 Million Awarded to Investigate Pediatric Obesity and Cancer-Related Co-Morbidities

VCU Massey Cancer Center

---

### Scientists Receive Grant for Lung Cancer Research

## \$2 Million NCI Grant to Study Metastatic Bladder Cancer

Duke Cancer Institute, Duke University Medical Center

---

## Gift Pushes Chuckstrong Tailgate Gala Past \$1.8 Million

Indiana University Melvin & Bren Simon Cancer Center

---

## DeLuca Foundation Grant to Fund Hematology Research Center

Yale Cancer Center, Yale School of Medicine

---

## \$1.47 Million Grant to Continue Lung Cancer Clinical Trials

UAMS Winthrop P. Rockefeller Cancer Institute

---

## Endowed Gift Establishes Katzen Family Director

GW Cancer Center

---

### LEADERSHIP TRANSITIONS

## Hennig Named Director of Oncology Advanced Practice

Duke Cancer Institute, Duke University Medical Center

---

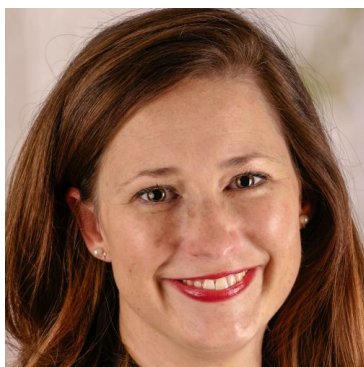


**Therese Hennig, MPAS, PA-C**, advanced practice leader for the division of Hematologic Malignancies and Cellular Therapy, has been named director of Oncology Advanced Practice for Duke Cancer Institute. Hennig has been recognized for her clinical expertise and leadership and has been instrumental in the design of provider practice models within the division. [Read More](#)

## Sociologist Promoted to Community Engagement Leadership Role

Roswell Park Comprehensive Cancer Center

---



**Elizabeth Bouchard, PhD**, has been promoted to associate director for community outreach and engagement at Roswell Park Comprehensive Cancer Center. In this new role, she will facilitate meaningful connections with area residents and partner organizations. Dr. Bouchard will work with other Roswell Park researchers and outreach specialists to take a deep dive into cancer issues that are important to Western New Yorkers. [Read More](#)

## Jaffray Named Chief Technology and Digital Officer

University of Texas MD Anderson Cancer Center

---

The University of Texas MD Anderson Cancer Center has named **David Jaffray, PhD**, as its first chief technology and digital officer. Jaffray will oversee MD Anderson's information services division and information security department. He will also hold a faculty appointment as professor of radiation physics with a joint appointment in imaging physics. [Read More](#)





## Assistant Director of Finance, Administration Joins WVU

WVU Cancer Institute

---



The WVU Cancer Institute welcomes **Mike Ridinger, RN, MBA**, as assistant director of finance and administration and the administrator of Hematology/Oncology. Ridinger has more than 15 years of experience with health and medical systems. His background includes understanding and utilizing economic, financial, market, and industry segment data to identify key issues and implications for potential strategies and plans.

[Read More](#)

## Hall Named Chair of Clinical Genetics

Fox Chase Cancer Center, Temple Health

---



**Michael Hall, MD, MS**, has been named chair of the Department of Clinical Genetics at Fox Chase Cancer Center. An associate professor in the department, Dr. Hall will continue to serve in his other roles at Fox Chase, including director of Gastrointestinal Risk Assessment; and NCCN, Genetic Colorectal/Colorectal Cancer Screening Panel member. [Read More](#)

## New Leader of Cancer Immunotherapy

UPMC Hillman Cancer Center

---



UPMC Hillman Cancer Center has appointed **Jason Luke, MD, FACP**, to direct the newly established Cancer Immunotherapeutics Center. A medical oncologist and clinical investigator, Dr. Luke specializes in early phase drug development for melanoma and solid tumors. He has been the lead investigator for numerous immunotherapies over the past several years. [Read More](#)

## **Enhanced Anticancer Compound May Allow for Precise Activation, Tracking of Treatment**

**[The Wistar Institute](#)**

---

## **Learning From a Rare Disease**

**[University of New Mexico Comprehensive Cancer Center](#)**

---

## **Medicaid Could Save \$2.6 Billion Within a Year if Just 1 Percent of Recipients Quit Smoking**

**[UCSF Helen Diller Family Comprehensive Cancer Center](#)**

---

## **New Target Found to Improve Response to Cancer Immunotherapy**

**[University of Michigan Rogel Cancer Center](#)**

---

## **Search Progresses for Laboratory Test to Predict Spread of Breast Cancer**

**[Sidney Kimmel Cancer Center at Johns Hopkins University](#)**

---

## **'Super-Hero' Stem Cells Survive Radiation to Regrow Muscles**

**[UCSF Helen Diller Family Comprehensive Cancer Center](#)**

---

## **Bone Cells Suppress Cancer Metastases**

**[Sidney Kimmel Cancer Center at Jefferson Health](#)**

---

## **How Cancer Hijacks Wound Healing to Create Its Own Blood Supply**

**[University of Virginia Cancer Center](#)**

---

## **Newly Discovered Protein Explains Leukemia's Treatment Resistance**

**[Robert H. Lurie Comprehensive Cancer Center of Northwestern University](#)**

---

## **Novel Role in Spatial Chromosome Organization Identified for Frequently Mutated Cancer Protein**

**[The Wistar Institute](#)**

---

## **Partial Breast Irradiation Effective Option for Low-Risk Breast Cancer**

**[The Ohio State University Comprehensive Cancer Center, James Cancer Hospital and Solove Research Institute](#)**

---

## **Study Aimed at Increasing Diversity Among Clinical Trial Participants**

**[USC Norris Comprehensive Cancer Center](#)**

---

## **First Direct Evidence Found That Oxidative Stress Damage Shortens Telomeres**

**[UPMC Hillman Cancer Center](#)**

---

## **Four Hallmarks of Metastasis Identified**

**[The University of Kansas Cancer Center](#)**

---

## **New Method Opens Unexplored Realms for Liquid Biopsies**

**[University of Michigan Rogel Cancer Center](#)**

---

## **Synthetic Biology Used to Target Cancer Cells While Sparing Healthy Tissue**

**[Stanford Cancer Institute](#)**

---

## **Tumor Mutations May Predict Response to Immunotherapy**

**[Sidney Kimmel Comprehensive Cancer Center at Johns Hopkins University](#)**

---

## **Air Pollution Poses Risks for Childhood Cancer Survivors**

**[Huntsman Cancer Institute, University of Utah](#)**

---

## Scientists Identify Genes Tied to Increased Risk of Ovarian Cancer

UCLA Jonsson Comprehensive Cancer Center

---

## Could a Simple Blood Test Replace the Invasive Tissue Biopsy?

Fred Hutchinson Cancer Research Center

---

## New Brain Tumor Imaging Technique Uses Protein Found in Scorpion Venom

Samuel Oschin Comprehensive Cancer Institute, Cedars-Sinai Medical Center

---

## Computational Tool Enables Powerful Molecular Analysis of Biomedical Tissue Samples

Stanford Cancer Institute

---

### OTHER NEWS

## Cancer-Focused Psychology Fellowship Receives New Accreditation

The University of Kansas Cancer Center

---

The University of Kansas Cancer Center's Clinical Health Psychology fellowship program, which focuses on onco-psychology, has earned national accreditation by the American Psychological Association (APA). It is one of only 10 APA-accredited clinical health psychology fellowship programs in the U.S., and one of only two accredited programs with a sub-specialty emphasis in psychological care for cancer patients. **Meagan Dwyer, PhD**, and her colleagues developed the fellowship program to meet the APA's accreditation standards. [Read More](#)

## Help to Quit

University of New Mexico Comprehensive Cancer Center

---



A new initiative at the UNM Comprehensive Cancer Center will offer cancer patients the tools they need to beat their smoking addiction. Led by **Emrullah Yilmaz, MD, PhD**, **Linda Cook, PhD**, and **Antoinette Quintana**, the UNM Cancer Center Smoking Cessation Program is part of the NCI's Cancer Center Cessation Initiative, better known as C3I. It has started with patients who have head and neck cancers and will expand over the next two years to include all patients. [Read More](#)

## Touching Base Daily Helps BMT Patients Recover More Quickly

UMMC Cancer Center and Research Institute

---



The ability to daily monitor a bone marrow or stem cell transplant patient once they're home is paying dividends, say members of the University of Mississippi Medical Center Bone Marrow Transplant unit. The unit is using remote patient monitoring tools developed by the UMMC Telehealth Center that were adjusted to monitor transplant patients after they leave the hospital. [Read More](#)

## Clinical Trials Collaboration Launched with Beijing Friendship Hospital

Fox Chase Cancer Center, Temple Health

---

Fox Chase Cancer Center and Beijing Friendship Hospital in China have initiated a collaborative

agreement that will provide both institutions with added capability in cancer clinical trials. Under the agreement, Fox Chase will provide consultative services intended to enhance Beijing Friendship Hospital's existing clinical trial capabilities. In the future, the Chinese hospital hopes to expand its own trials, while serving as a site for Fox Chase to conduct studies suitable for multiple, diverse populations. [Read More](#)

## Texas Raises Tobacco Sales Age to 21

**University of Texas MD Anderson Cancer Center**

---

The University of Texas MD Anderson Cancer Center applauds the Texas Legislature for passing Senate Bill 21, which raises the minimum legal sale age for all tobacco products from 18 to 21. The policy, which will go into effect on September 1, 2019, is an important step toward protecting the health of future generations and reducing the burden of tobacco use in Texas. [Read More](#)

## Total Cancer Care Protocol Opened to Pediatric Patients

**UK Markey Cancer Center**

---

UK HealthCare recently opened the Oncology Research Information Exchange Network's (ORIEN) Total Cancer Care Protocol to pediatric patients, becoming the first cancer program in the country to do so. ORIEN is an alliance of 19 major cancer centers that shares information to allow its members to push forward evidence-based cancer care to patients. The University of Kentucky Markey Cancer Center joined the network in 2017. [Read More](#)

## UVA Partnering to Improve HPV Vaccination Rates in Western Virginia

**University of Virginia Cancer Center**

---

University of Virginia Health System is joining a coalition of health care organizations to improve vaccination rates in western Virginia for human papillomavirus (HPV). Virginia Center for Health Innovation is partnering with 40 pediatric and family medicine sites from UVA, Ballad Health, and Carilion Clinic to boost HPV vaccinations with the support of a \$225,000 grant from Merck. [Read More](#)

### JOB OPPORTUNITIES

#### Associate Director for Administration

**Case Comprehensive Cancer Center**

---

#### Research Nurse Manager, Quality Assurance and Education

**Hollings Cancer Center, Medical University of South Carolina**

---

#### Director, Office for Human Research Studies

**Dana-Farber Cancer Institute, Harvard Medical School**

---

#### MRI Guided Radiation Therapy Program Leader, Department of Radiation Oncology

**Sidney Kimmel Cancer Center at Jefferson Health**

---

### AACI MEETING ANNOUNCEMENTS



#### 11th Annual AACI CRI Meeting

July 9-11, 2019

Chicago, IL

---

[Learn More](#)

[Register Today](#)

#### 2019 AACI/CCAF Annual Meeting





October 20-22, 2019  
Washington, DC

---

[Learn More](#)

[Register Today](#)

## MEMBER MEETING ANNOUNCEMENTS

### Imaging Science and Cancer Biology Symposium

June 21-23, 2019  
Frederick, MD

---

[Learn More](#)

### SITC Women in Cancer Immunotherapy Network Leadership Institute

August 19-20, 2019  
Seattle, WA

---

[Learn More](#)

### Wendy & Emery Reves International Breast Cancer Symposium

September 20-21, 2019  
Dallas, TX

---

[Learn More](#)

### Multidisciplinary Approaches to Cancer Symposium

October 10-13, 2019  
Las Vegas, NV

---

[Learn More](#)

### Cancer and Inflammation: From Micro to Macro

October 17-18, 2019  
Bethesda, MD

---

[Learn More](#)

### 16th International Conference on Bioactive Lipids in Cancer, Inflammation, and Related Diseases

October 20-23, 2019  
St. Petersburg, FL

---

[Learn More](#)

### Artificial Intelligence in Oncology: Advancements and Policy

October 24, 2019  
Cleveland, OH

---

[Learn More](#)

---



Medical Arts Building  
3708 Fifth Avenue, Suite 503  
Pittsburgh, PA 15213  
412-647-6111

FOLLOW US



Copyright 2019 | Association of American Cancer Institutes