

# States' Investments in Cancer Research

The Cancer Institute of New Jersey  
Robert S. DiPaola M.D.



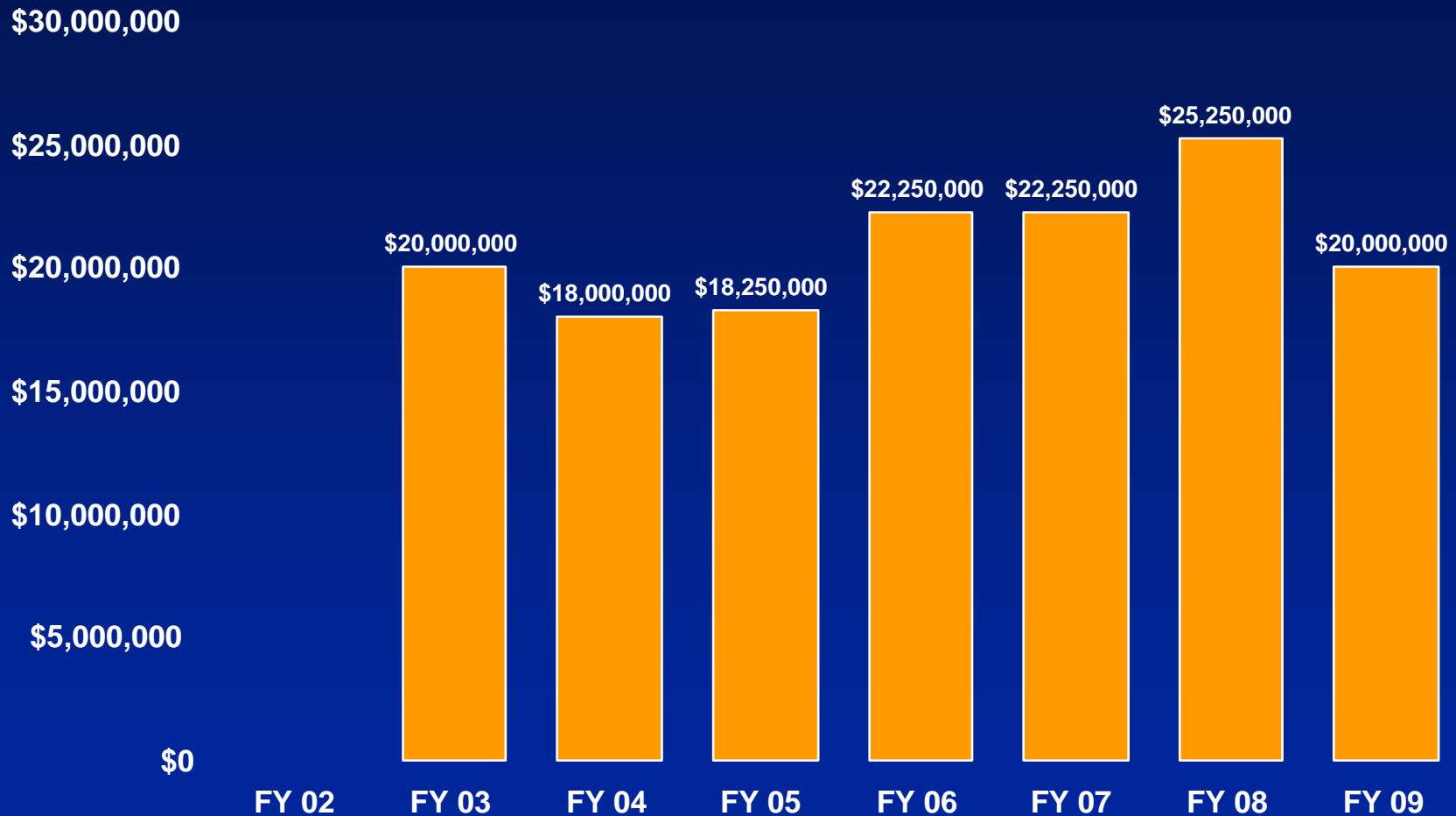
ROBERT WOOD JOHNSON  
MEDICAL SCHOOL  
University of Medicine & Dentistry of New Jersey



# Timeline of CINJ Growth

- 1992
  - NCI P20 Planning Grant
- 1993
  - Founding Director-Hait
  - Faculty recruitment
- 1994
  - Groundbreaking
- 1996
  - P30 Clinical Cancer Center Grant (CCSG)
  - Building opened
- 1997
  - State-wide network of Hospitals
- 1999
  - Competitive CCSG renewal P30
- 2001
  - Groundbreaking
- 2002
  - Comprehensive Cancer Center
- 2003
  - State Appropriation
  - New Jersey Clinical Trial Connect
  - CINJ Oncology Group (CINJOG)
- 2004
  - Competitive CCSG renewal P30
  - New building opened
- 2005
  - Strategic Planning
- 2007
  - Implementation of plan
  - Strengthen Infrastructure

# State of NJ Appropriation History FY 2002 – FY 2009



# Goals for State Investment

1. Improve access to clinical trials (Network)
2. Stabilize CINJ, New Jersey's only NCI designated comprehensive cancer center
3. Raise visibility/education of New Jersey as National leader in Cancer Research-Reporting to the State
4. Strengthen cancer control
5. Improve access of under-served to cancer prevention and care

# Goal 1: Clinical Trial Access: CINJ Network

- CINJ Oncology clinical trials Group (CINJOG)
  - Started as a network 1997 with 15-20 Statewide Hospitals
  - Full State-wide clinical trial cooperative group started in 2003
  - Reimburses based on accrual
  - A Strong Statewide Resource that maximizes the delivery of “the best” cancer care throughout the state
  - Provide Network professionals with continuing medical and nursing education-Shared clinical trials
- New Jersey Clinical Trials Connect
  - Network based/Website
  - “Reverse Tumor Registry”

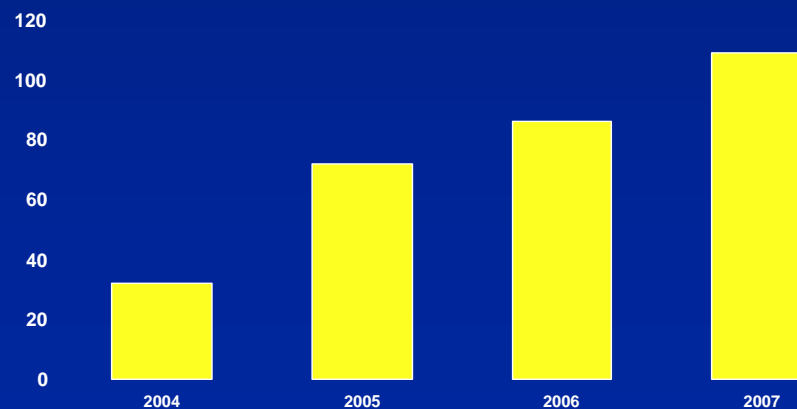
# The CINJ Network

The Cancer Institute of New Jersey Network

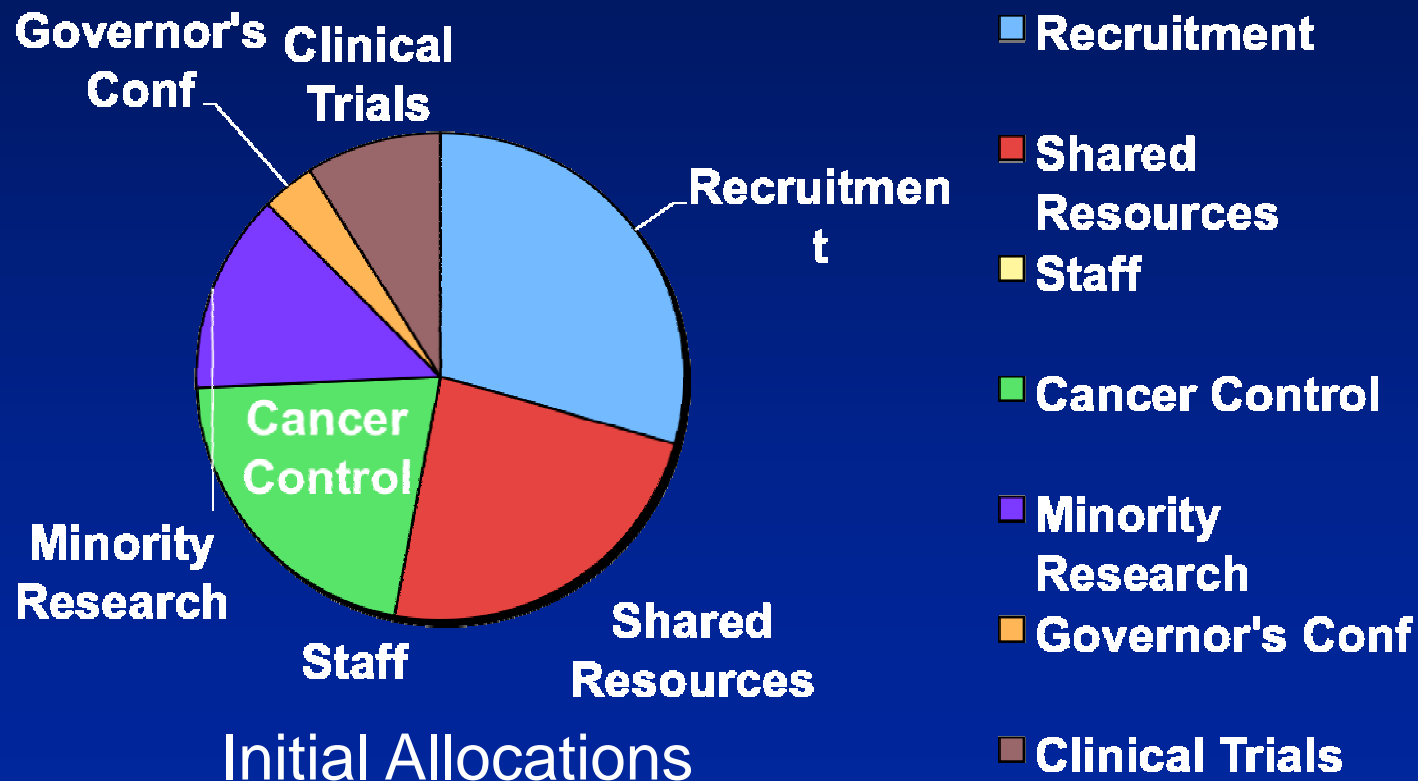


- CINJOG Hospitals
- CINJ at Hamilton
- University-wide effort

## Network Clinical Trial Accrual



# Goal 2: Stabilization: Recruitment/Shared Resources



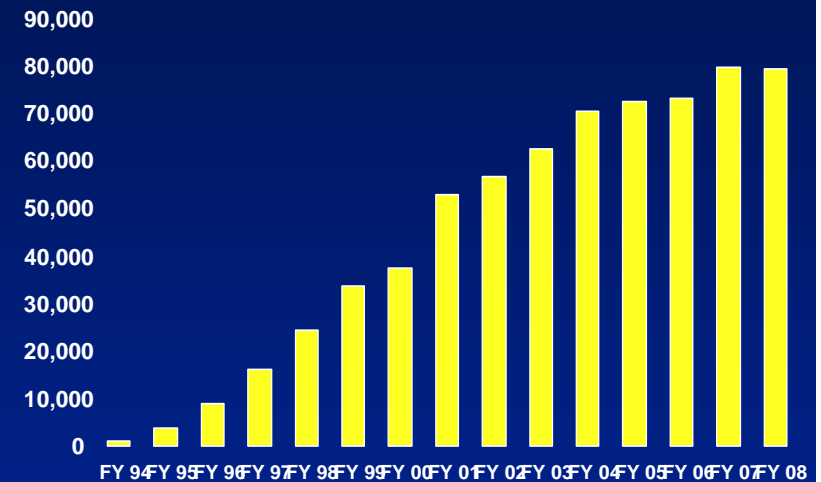
# Goal 2 Stabilization: Development of Shared Resources

- Analytical Cytometry
- DNA Sequencing
- Biometrics
- Office of Human Research Services
- Tissue Analytical Services
  - Immunohistochemistry
  - Tissue Retrieval
  - Tissue Microarray
- Research Pharmacy
- Transcription Profiling
- Transgenic Mouse Knockout
- Centralized Educ. & Training
- Primary care research network
- Bioinformatics
- Preclinical imaging
- Pharmacokinetics

# Goal 3: Visibility/Service: CINJ Highlighted Clinical/Research Services

- Dean and Betty Gallo Prostate Center
- LIFE Center/High Risk Center
- Fannie E. Rippel Center Women's Center
- Pediatric Hematology/Oncology
- Hematopoietic Cancers/BMT
- Radiation Oncology (New Brunswick, Hamilton, Newark)
- Experimental Therapeutics Program
- Gynecologic Oncology Expertise

Patient Visits



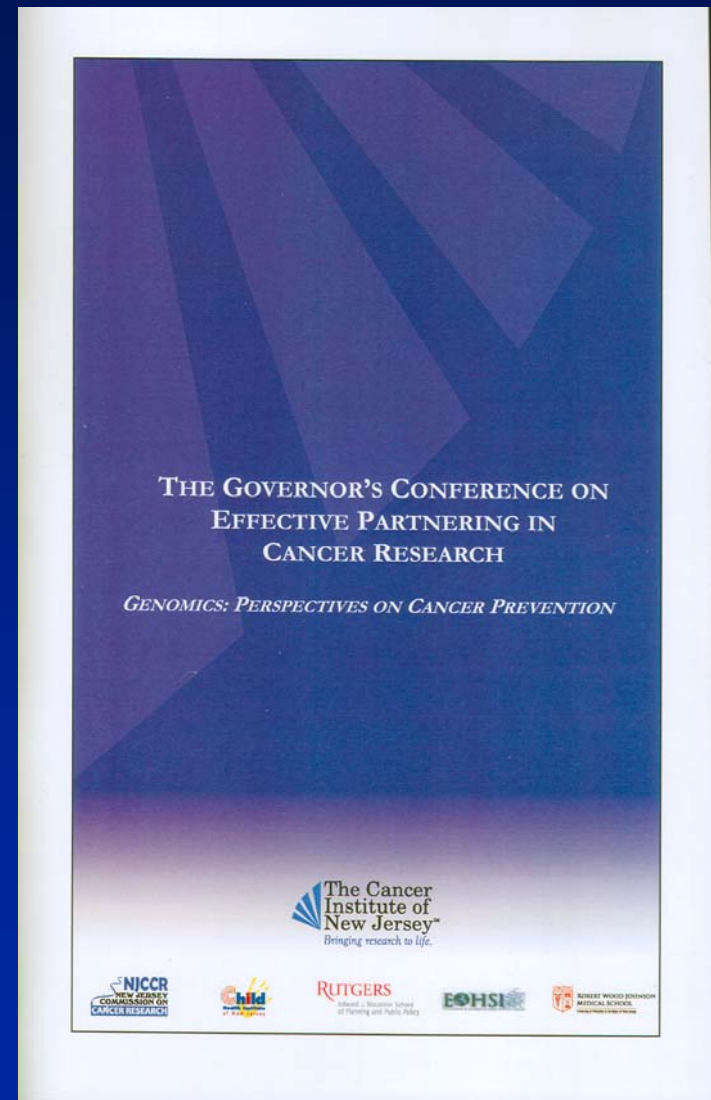
# Partnerships: Annual Statewide Retreats

- Partnership with the state (NJCCR)
- **Organized around CINJ Programs**
- Investigators from multiple disciplines enhance collaborations
- Integrates basic, clinical and population science
- Annual attendance > 600
- Annual presentations >200



# Partnerships: Annual New Jersey Governor's Conference

- Annual Conference designed to enhance partnering in cancer research
  - Academia, Pharma and Government
  - National and international leaders
- *Example: 2007 Genomics: Perspectives on Cancer Prevention*
  - Genomics and Cancer Risk Roundtable
  - Identification of Risk
  - Implementation Strategies in Response to Risk
  - Ethics of Intervention



# Partnerships-YouTube

- Partnered with New Jersey Cancer Commission to develop YouTube site
- Goal is to serve as a centralized NJ resource for cancer information for the public
- Provides outlet for video/audio podcasts of CINJ Programs
  - Annual Retreat
  - Governor's Conference
  - Grand Rounds
- 1450 "visits" in 1st 6 weeks



**Playlists**

	<p><b>About The Cancer Institute of New Jersey</b> 1 Videos</p> <p>The Cancer Institute of New Jersey (CINJ) is one of 39 National Cancer Institute-designated Comprehensive Cancer Centers in the nation and the only such center in New Jersey. CINJ is a Center Of Excellence of the UMDNJ-Robert Wood Johnson Medical School</p>	<p><a href="#">Play All</a></p> <p><a href="#">Subscribe</a></p> <p><a href="#">Share</a></p>
	<p><b>Genomics: Perspectives on Cancer Prevention</b> 10 Videos</p> <p>Proceedings of The 2007 New Jersey Governor's Conference on Effective Partnering in Cancer Research</p>	<p><a href="#">Play All</a></p> <p><a href="#">Subscribe</a></p> <p><a href="#">Share</a></p>
	<p><b>Young Adults with Cancer: Unmet Needs</b> 5 Videos</p> <p>Cancer in young adults (ages 21-39 years) represents a significant health problem and presents a broad range of challenges. A recent NCI Progress Review Group Report entitled "Closing the Research Gap: Adolescents and Young Adults with Cancer" highlighted some of the complex and</p>	<p><a href="#">Play All</a></p> <p><a href="#">Subscribe</a></p> <p><a href="#">Share</a></p>

**Videos (16)** [Subscribe to CancerInstNJ's videos](#)

[Videos](#) | [Most Viewed](#) | [Most Discussed](#)

<p><b>About The Cancer Institute of New Jersey</b> 03:31 Added: 1 month ago Views: 1,448</p>	<p><b>Young Adults with Cancer: Psychosocial Issues</b> 33:19 Added: 1 week ago Views: 50</p>	<p><b>p53 Pathway Polymorphisms and Predisposition to Cancer</b> 41:54 Added: 1 week ago Views: 49</p>
<p><b>Cancer Risk in BRCA1 Mutation Carriers</b> 39:17 Added: 3 weeks ago Views: 44</p>	<p><b>Matthew Zachary: "I'm Too Young for This!!"</b> 40:40 Added: 3 weeks ago Views: 37</p>	<p><b>Young Adults with Cancer: A Dialogue on Unmet Needs (Part 2)</b> 36:45 Added: 1 week ago Views: 29</p>

# Goals 4 and 5: Cancer Control/Underserved (New Activities)

- Primary Care Network
  - 120 practices
  - 750,000 patients
- RWJ Foundation Grant
  - \$12M over 4 years
    - Population Science
    - Survival
    - Disparities
    - Networks

# Summary

- CINJ started early with a superb Network of hospitals/CINJOG
- State Allocations helped further development and stabilization of CINJ
- Partnerships with NJCCR have helped with the development of state-wide programs (Retreats, Governor's conference, You Tube site)
- State-wide research and educational efforts are expanding
  - CINJOG, Primary Care Network Research
  - Research Collaborations
  - RWJ Foundation Grant for Population Science Research