

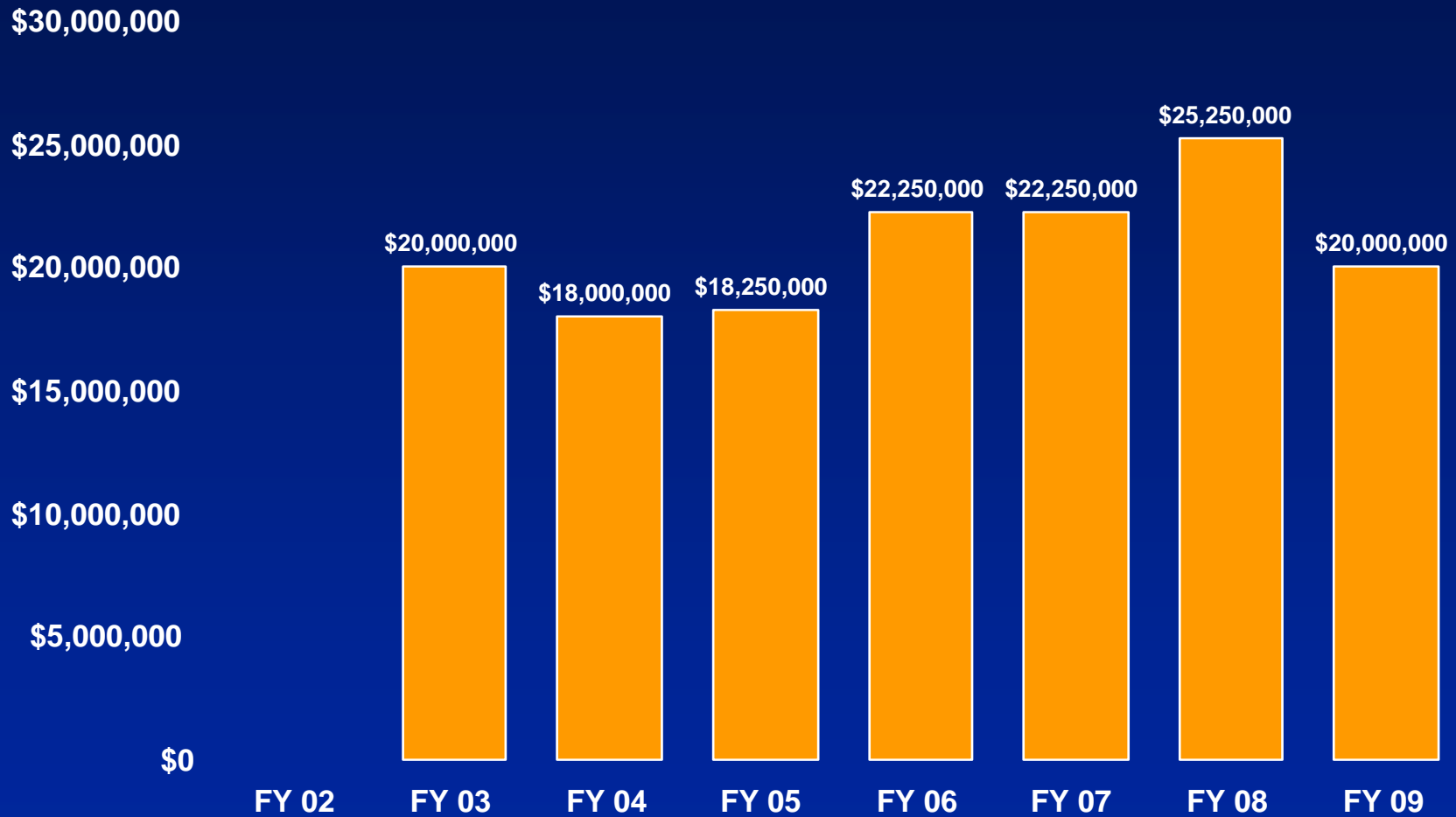
States' Investments in Cancer Research

The Cancer Institute of New Jersey
Robert S. DiPaola M.D.

Timeline of CINJ Growth

- 1992
 - NCI P20 Planning Grant
- 1993
 - Founding Director-Hait
 - Faculty recruitment
- 1994
 - Groundbreaking
- 1996
 - P30 Clinical Cancer Center Grant (CCSG)
 - Building opened
- 1997
 - State-wide network of Hospitals
- 1999
 - Competitive CCSG renewal P30
- 2001
 - Groundbreaking
- 2002
 - Comprehensive Cancer Center
- 2003
 - State Appropriation
 - New Jersey Clinical Trial Connect
 - CINJ Oncology Group (CINJOG)
- 2004
 - Competitive CCSG renewal P30
 - New building opened
- 2005
 - Strategic Planning
- 2007
 - Implementation of plan
 - Strengthen Infrastructure

State of NJ Appropriation History FY 2002 – FY 2009



Goals for State Investment

1. Improve access to clinical trials (Network)
2. Stabilize CINJ, New Jersey's only NCI designated comprehensive cancer center
3. Raise visibility/education of New Jersey as National leader in Cancer Research-Reporting to the State
4. Strengthen cancer control
5. Improve access of under-served to cancer prevention and care

Goal 1: Clinical Trial Access: CINJ Network

- CINJ Oncology clinical trials Group (CINJOG)
 - Started as a network 1997 with 15-20 Statewide Hospitals
 - Full State-wide clinical trial cooperative group started in 2003
 - Reimburses based on accrual
 - A Strong Statewide Resource that maximizes the delivery of “the best” cancer care throughout the state
 - Provide Network professionals with continuing medical and nursing education-Shared clinical trials
- New Jersey Clinical Trials Connect
 - Network based/Website
 - “Reverse Tumor Registry”

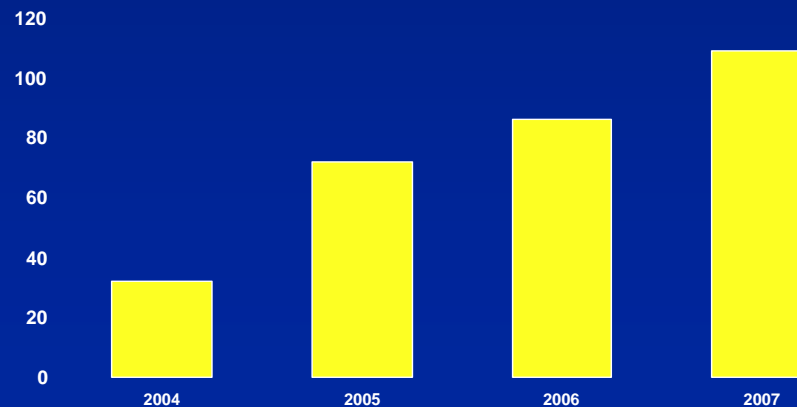
The CINJ Network

The Cancer Institute of New Jersey Network

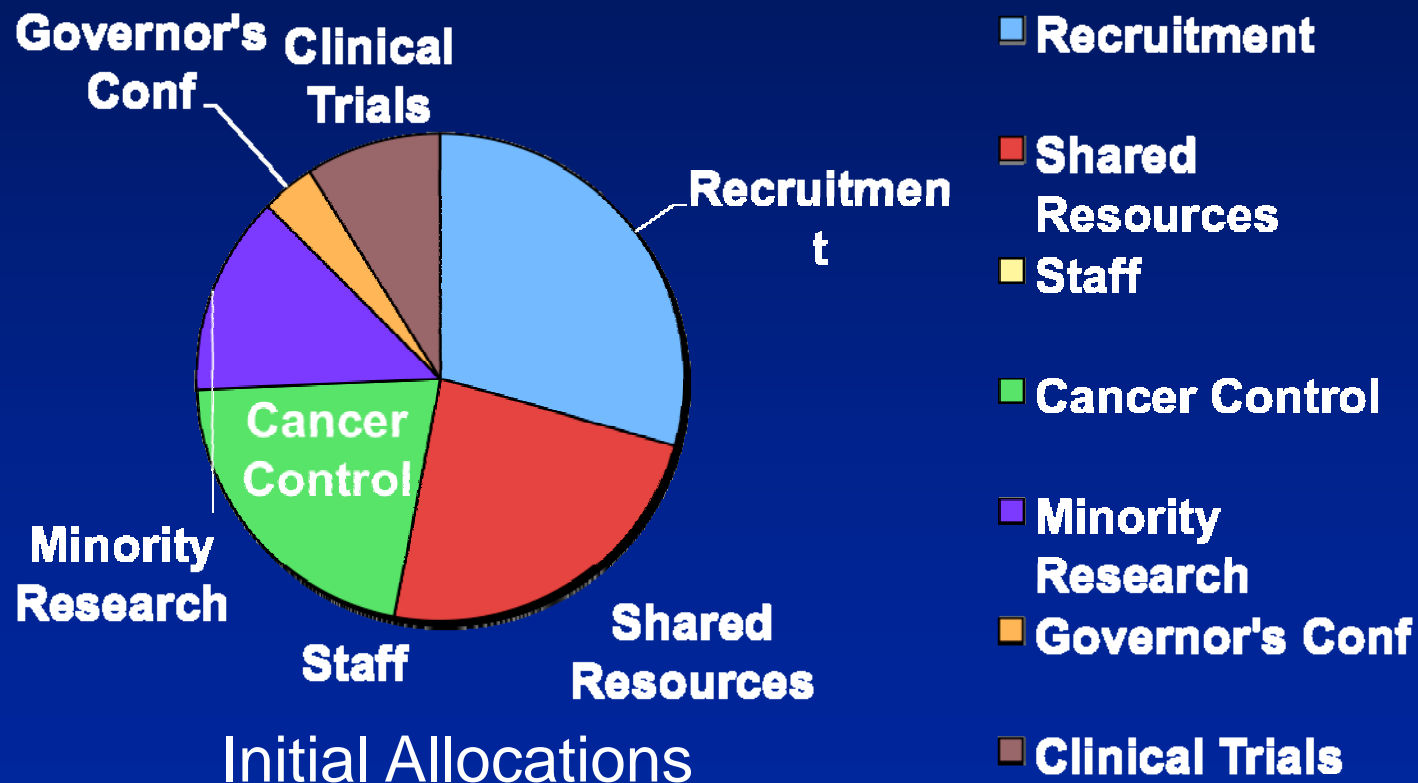


- CINJOG Hospitals
- CINJ at Hamilton
- University-wide effort

Network Clinical Trial Accrual



Goal 2: Stabilization: Recruitment/Shared Resources



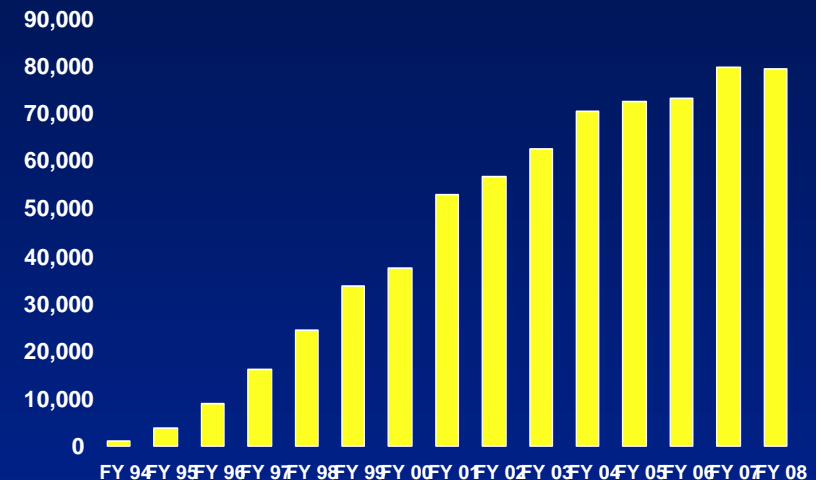
Goal 2 Stabilization: Development of Shared Resources

- Analytical Cytometry
- DNA Sequencing
- Biometrics
- Office of Human Research Services
- Tissue Analytical Services
 - Immunohistochemistry
 - Tissue Retrieval
 - Tissue Microarray
- Research Pharmacy
- Transcription Profiling
- Transgenic Mouse Knockout
- Centralized Educ. & Training
- Primary care research network
- Bioinformatics
- Preclinical imaging
- Pharmacokinetics

Goal 3: Visibility/Service: CINJ Highlighted Clinical/Research Services

- Dean and Betty Gallo Prostate Center
- LIFE Center/High Risk Center
- Fannie E. Rippel Center Women's Center
- Pediatric Hematology/Oncology
- Hematopoietic Cancers/BMT
- Radiation Oncology (New Brunswick, Hamilton, Newark)
- Experimental Therapeutics Program
- Gynecologic Oncology Expertise

Patient Visits



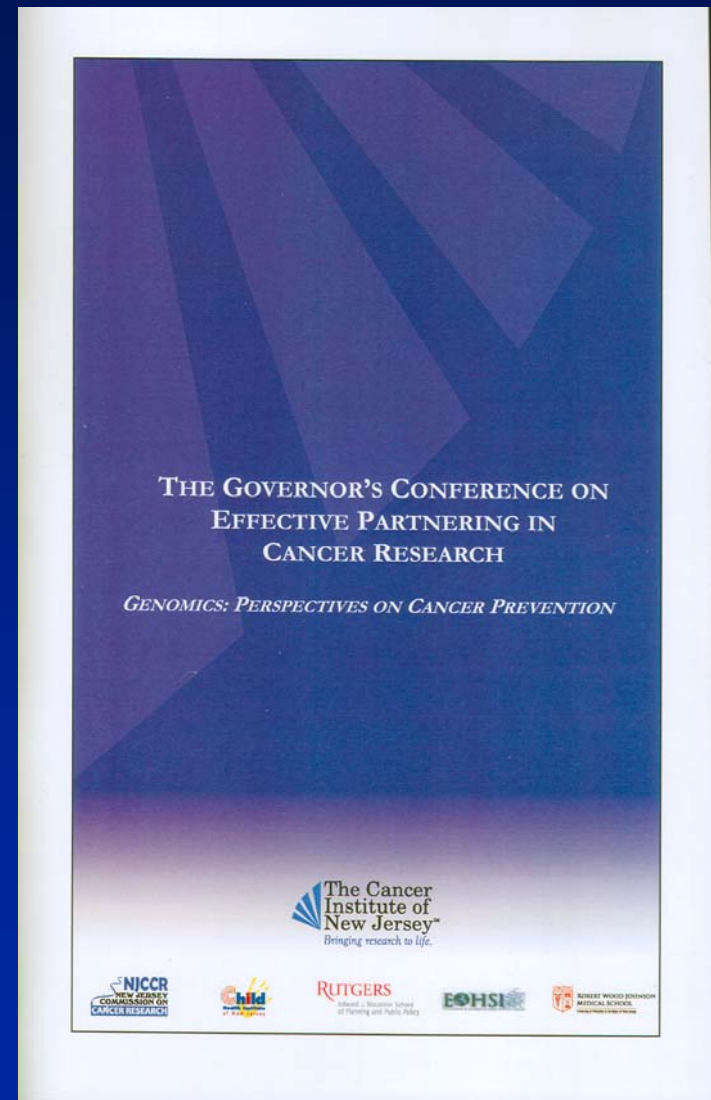
Partnerships: Annual Statewide Retreats

- Partnership with the state (NJCCR)
- **Organized around CINJ Programs**
- Investigators from multiple disciplines enhance collaborations
- Integrates basic, clinical and population science
- Annual attendance > 600
- Annual presentations >200



Partnerships: Annual New Jersey Governor's Conference

- Annual Conference designed to enhance partnering in cancer research
 - Academia, Pharma and Government
 - National and international leaders
- *Example: 2007 Genomics: Perspectives on Cancer Prevention*
 - Genomics and Cancer Risk Roundtable
 - Identification of Risk
 - Implementation Strategies in Response to Risk
 - Ethics of Intervention



Partnerships-YouTube

- Partnered with New Jersey Cancer Commission to develop YouTube site
- Goal is to serve as a centralized NJ resource for cancer information for the public
- Provides outlet for video/audio podcasts of CINJ Programs
 - Annual Retreat
 - Governor's Conference
 - Grand Rounds
- 1450 "visits" in 1st 6 weeks



Playlists

	About The Cancer Institute of New Jersey 1 Videos The Cancer Institute of New Jersey (CINJ) is one of 39 National Cancer Institute-designated Comprehensive Cancer Centers in the nation and the only such center in New Jersey. CINJ is a Center Of Excellence of the UMDNJ-Robert Wood Johnson Medical School	Play All Subscribe Share
	Genomics: Perspectives on Cancer Prevention 10 Videos Proceedings of The 2007 New Jersey Governor's Conference on Effective Partnering in Cancer Research	Play All Subscribe Share
	Young Adults with Cancer: Unmet Needs 5 Videos Cancer in young adults (ages 21-39 years) represents a significant health problem and presents a broad range of challenges. A recent NCI Progress Review Group Report entitled "Closing the Research Gap: Adolescents and Young Adults with Cancer" highlighted some of the complex and	Play All Subscribe Share

Videos (16) [Subscribe to CancerInstNJ's videos](#)

[Videos](#) | [Most Viewed](#) | [Most Discussed](#)

About The Cancer Institute of New Jersey 03:31 Added: 1 month ago Views: 1,448	Young Adults with Cancer: Psychosocial Issues 33:19 Added: 1 week ago Views: 50	p53 Pathway Polymorphisms and Predisposition to Cancer 41:54 Added: 1 week ago Views: 49
Cancer Risk in BRCA1 Mutation Carriers 39:17 Added: 3 weeks ago Views: 44	Matthew Zachary: "I'm Too Young for This!!" 40:40 Added: 3 weeks ago Views: 37	Young Adults with Cancer: A Dialogue on Unmet Needs (Part 2) 36:45 Added: 1 week ago Views: 29

Goals 4 and 5: Cancer Control/Underserved (New Activities)

- Primary Care Network
 - 120 practices
 - 750,000 patients
- RWJ Foundation Grant
 - \$12M over 4 years
 - Population Science
 - Survival
 - Disparities
 - Networks

Summary

- CINJ started early with a superb Network of hospitals/CINJOG
- State Allocations helped further development and stabilization of CINJ
- Partnerships with NJCCR have helped with the development of state-wide programs (Retreats, Governor's conference, You Tube site)
- State-wide research and educational efforts are expanding
 - CINJOG, Primary Care Network Research
 - Research Collaborations
 - RWJ Foundation Grant for Population Science Research