

Louisiana Cancer  
Research Consortium

## Louisiana's Investment in Cancer Research

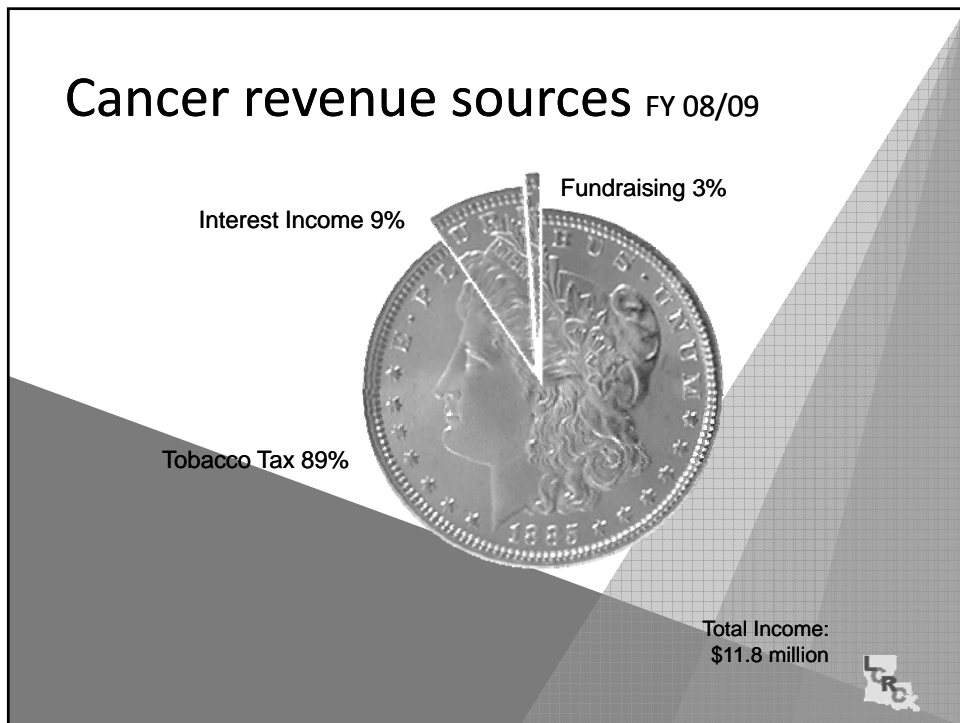
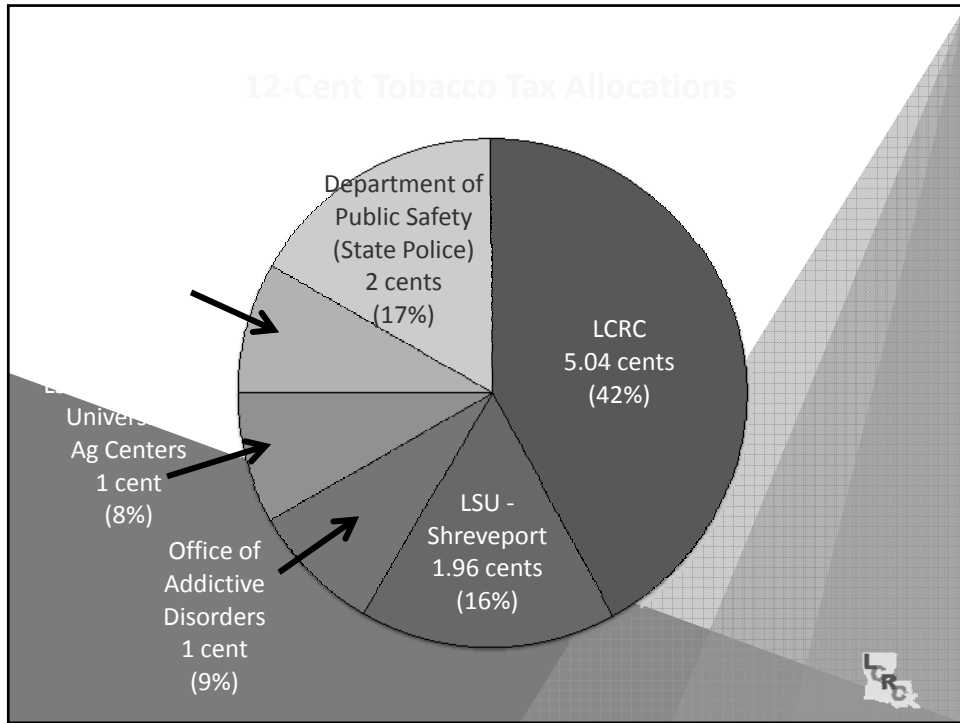
**Prescott Deininger, Ph.D.**  
Co-Chair LCRC, Interim Director of the Tulane Cancer Center

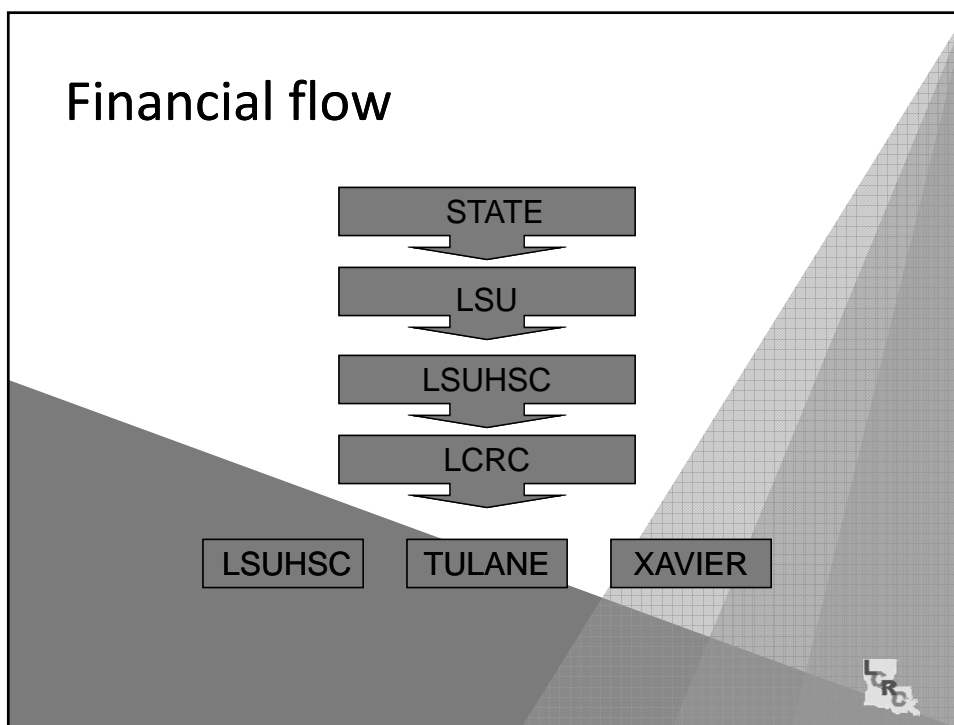
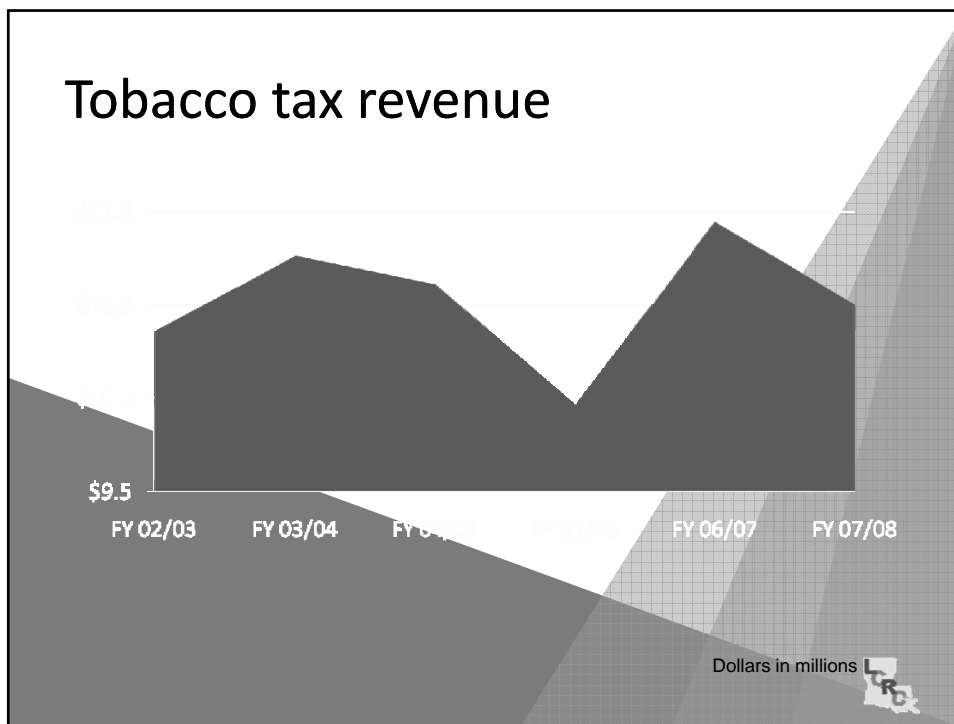
**Augusto Ochoa, M.D.**  
Co-Chair LCRC, Director LSUHSC of New Orleans Stanley S. Scott Cancer Center

**Steven E. Moye**  
President & CEO

## The Beginning of Change

- 2002 Legislative Actions
  - **Senate Bill 73** – Sen. John J. Hainkel, Jr.
    - Established LCRC - a private 501c3 entity
      - Joint Governance (Tulane and LSU)
      - Mission: Develop an NCI Cancer Center
  - **House Bill 157** – Rep. Mitch Landrieu
    - Recurrent funding through a new 12-cent tobacco tax increase to 36 cents per pack
      - LCRC - 5 cents per pack of cigarettes sold
        - 2 cents of this for Smoking Cessation Program
      - Each 1 cent ~ \$3.7 million annually
      - Currently ~ \$10.5 million per year for the Center





## Financial issues

- Single revenue source
- Limited fundraising
- Fixed % of declining tobacco tax
- Financial flow



## 2007 Legislative Session

- Funding for the Louisiana Cancer Research Center
  - Construction costs ~ \$47 million pre-Katrina
  - Soared to > \$90 million post-Katrina
  - Using cancer research program development funds not an option
  - **Capital Outlay Bill** – Sen. John Alario
    - Louisiana State Legislature approved \$64 million
  - **Supplemental Spending Bill** - Sen. John Alario
    - Also approved \$38 supplemental spending bill
  - Combined legislation provides \$102 million needed for construction
  - Awaiting signatures/approval of final contracts

